



ATLANTIS II

2,426 sq.ft.

Phase 115-2
Block 21 Lot 97

Riverside
South

\$655,598.69

CLOSING NOVEMBER 30, 2021

COLOURS & FINISHES TO BE SELECTED

This end unit ENERGY STAR® Certified townhome features the optional 4 bedroom with loft layout and luxury ensuite includes an oak hardwood staircase from ground floor to second floor

Urbandale's Standard Features

- Quartz Countertops in Kitchen, Ensuite & Main Bath • 39" Upper Kitchen Cabinetry
 - Soft close hinges and drawers in Kitchen & Bathrooms (locations specified by builder)
- Central Air Conditioning • Tiled Ensuite Shower Walls with Custom Glass Door

Urbandale's Smart Home Features

Control everything from your phone with no subscriptions.
Discover Urbandale's smart home features as standard!

- Video Doorbell • Programmable WiFi Thermostat • Four Smart Switches (locations specified by builder)
- WiFi Garage Door Opener • Convenient USB outlet in Kitchen & Master Bedroom (locations specified by builder)



All illustrations are artist concepts. Homes may be left of right versions. All dimensions are approximate. Actual usable floor space may vary from stated area. Structural/mechanical requirements may result in dimensional revisions and/or adjustments to layout. Plans and specifications are subject to change without notice. Exterior elevations are determined by Urbandale and may vary. ENERGY STAR® is an official mark of Natural Resources Canada. Used with permission. E. & O. E. 07/12/20

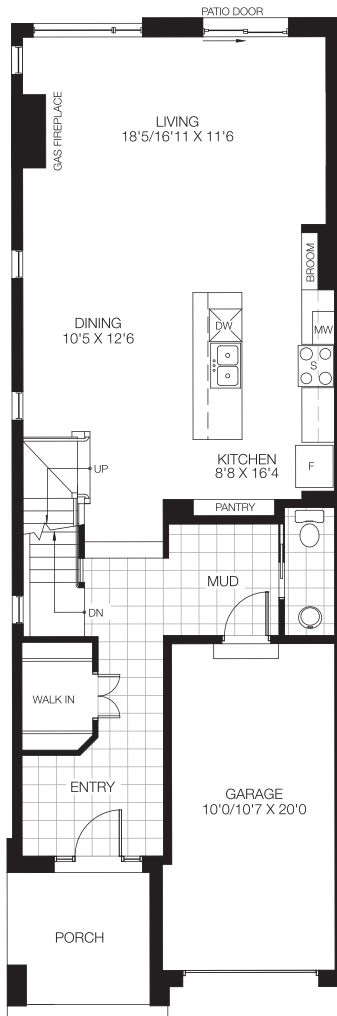


ATLANTIS II

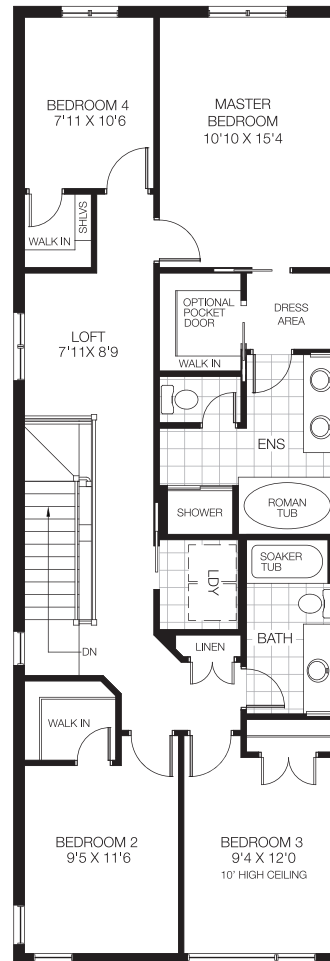
2,426 sq.ft.

Phase 115-2
Block 21 Lot 97

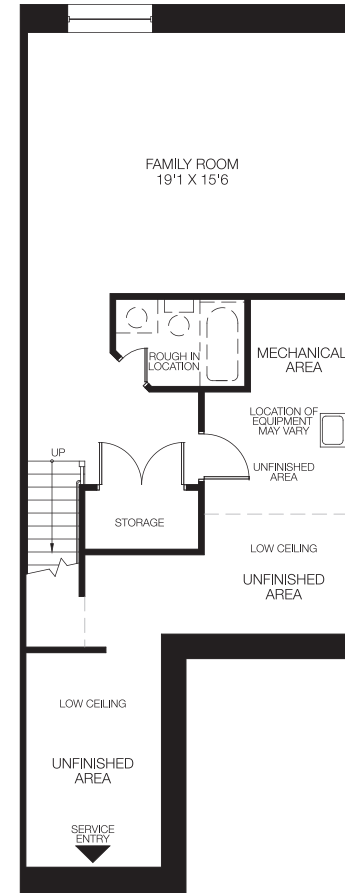
Riverside
South



GROUND FLOOR



OPT 1. BEDROOM FLOOR
4 BEDROOMS W/LOFT



BASEMENT
FINISHED AREA 418 SQ.FT.



All illustrations are artist concepts. Homes may be left or right versions. All dimensions are approximate. Actual usable floor space may vary from stated area. Structural/mechanical requirements may result in dimensional revisions and/or adjustments to layout including bulkheads. Brick sides and rears are subject to site specifications, please see Sales Consultant for details. Plans and specifications are subject to change without notice. Exterior elevations are determined by Urbandale and may vary. The ENERGY STAR® for New Homes Standard is administered and promoted in Canada by Natural Resources Canada. E. & O. E. 07/12/20





DISCOVERY
2,098 sq.ft.

Phase 115-2
Block 21 Lot 98

Riverside
South

\$600,900

CLOSING DECEMBER 2, 2021

COLOURS & FINISHES TO BE SELECTED

This interior unit ENERGY STAR® Certified townhome features the standard
3 bedroom with computer nook layout

Urbandale's Standard Features

- Quartz Countertops in Kitchen, Ensuite & Main Bath • 39" Upper Kitchen Cabinetry
 - Soft close hinges and drawers in Kitchen & Bathrooms (locations specified by builder)
- Central Air Conditioning • Tiled Ensuite Shower Walls with Custom Glass Door

Urbandale's Smart Home Features

**Control everything from your phone with no subscriptions.
Discover Urbandale's smart home features as standard!**

- Video Doorbell • Programmable WiFi Thermostat • Four Smart Switches (locations specified by builder)
- WiFi Garage Door Opener • Convenient USB outlet in Kitchen & Master Bedroom (locations specified by builder)



All illustrations are artist concepts. Homes may be left of right versions. All dimensions are approximate. Actual usable floor space may vary from stated area. Structural/mechanical requirements may result in dimensional revisions and/or adjustments to layout. Plans and specifications are subject to change without notice. Exterior elevations are determined by Urbandale and may vary. ENERGY STAR® is an official mark of Natural Resources Canada. Used with permission. E. & O. E. 07/12/20

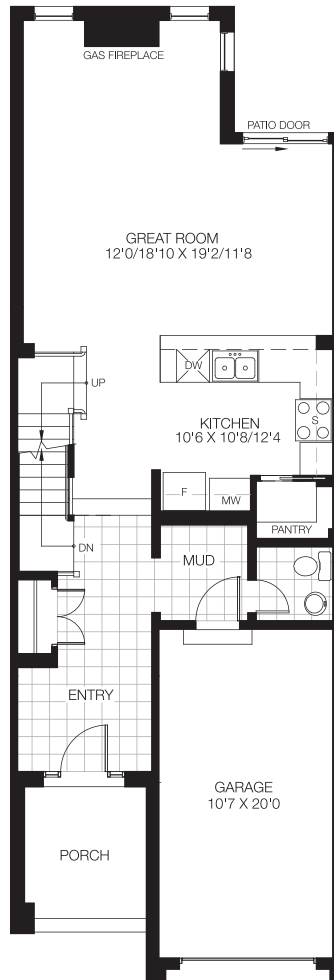


DISCOVERY

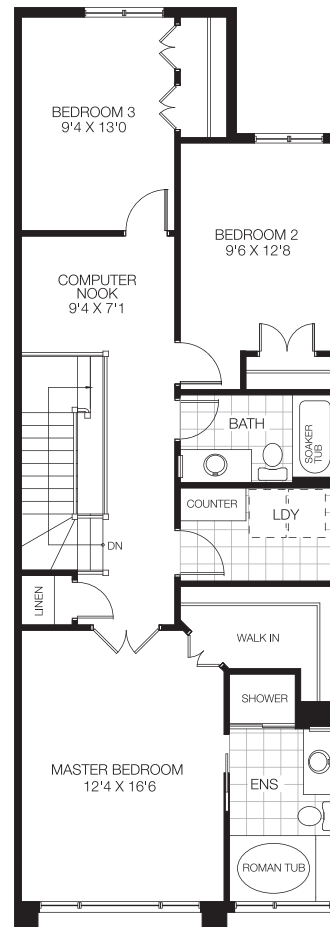
2,098 sq.ft.

Phase 115-2
Block 21 Lot 98

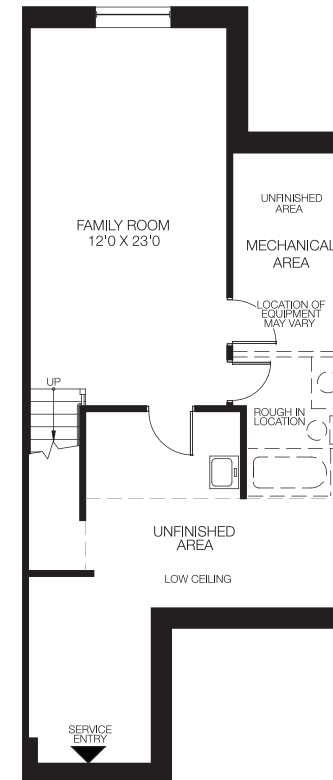
Riverside
South



GROUND FLOOR



BEDROOM FLOOR
3 BEDROOMS
W/COMPUTER NOOK



BASEMENT
FINISHED AREA 310 SQ.FT.



All illustrations are artist concepts. Homes may be left or right versions. All dimensions are approximate. Actual usable floor space may vary from stated area. Structural/mechanical requirements may result in dimensional revisions and/or adjustments to layout including bulkheads. Brick sides and rears are subject to site specifications, please see Sales Consultant for details. Plans and specifications are subject to change without notice. Exterior elevations are determined by Urbandale and may vary. The ENERGY STAR® for New Homes Standard is administered and promoted in Canada by Natural Resources Canada. E. & O. E. 07/12/20





ATLANTIS

2,324 sq.ft.

Phase 115-2
Block 21 Lot 99

Riverside
South

\$623,129.69

CLOSING DECEMBER 7, 2021

COLOURS & FINISHES TO BE SELECTED

This interior unit ENERGY STAR® Certified townhome features the standard 3 bedroom with loft layout and includes an oak hardwood staircase from ground floor to second floor

Urbandale's Standard Features

- Quartz Countertops in Kitchen, Ensuite & Main Bath • 39" Upper Kitchen Cabinetry
 - Soft close hinges and drawers in Kitchen & Bathrooms (locations specified by builder)
- Central Air Conditioning • Tiled Ensuite Shower Walls with Custom Glass Door

Urbandale's Smart Home Features

Control everything from your phone with no subscriptions.
Discover Urbandale's smart home features as standard!

- Video Doorbell • Programmable WiFi Thermostat • Four Smart Switches (locations specified by builder)
- WiFi Garage Door Opener • Convenient USB outlet in Kitchen & Master Bedroom (locations specified by builder)



All illustrations are artist concepts. Homes may be left of right versions. All dimensions are approximate. Actual usable floor space may vary from stated area. Structural/mechanical requirements may result in dimensional revisions and/or adjustments to layout. Plans and specifications are subject to change without notice. Exterior elevations are determined by Urbandale and may vary. ENERGY STAR® is an official mark of Natural Resources Canada. Used with permission. E. & O. E. 07/12/20

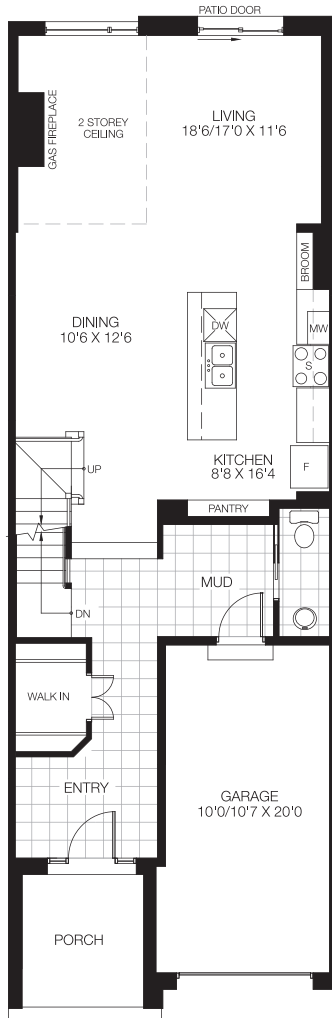


ATLANTIS

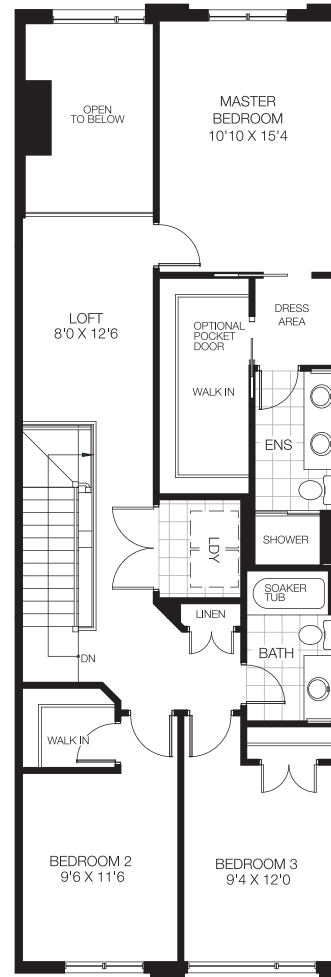
2,324 sq.ft.

Phase 115-2
Block 21 Lot 99

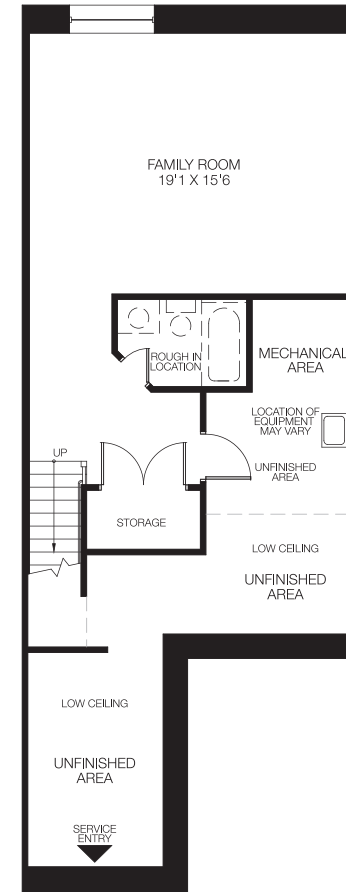
Riverside
South



GROUND FLOOR



BEDROOM FLOOR
3 BEDROOMS W/LOFT



BASEMENT
FINISHED AREA 418 SQ.FT.



All illustrations are artist concepts. Homes may be left or right versions. All dimensions are approximate. Actual usable floor space may vary from stated area. Structural/mechanical requirements may result in dimensional revisions and/or adjustments to layout including bulkheads. Brick sides and rears are subject to site specifications, please see Sales Consultant for details. Plans and specifications are subject to change without notice. Exterior elevations are determined by Urbandale and may vary. The ENERGY STAR® for New Homes Standard is administered and promoted in Canada by Natural Resources Canada. E. & O. E. 07/12/20





CALYPSO
1,770 sq.ft.

Phase 115-2
Block 21 Lot 100

Riverside
South

\$574,335 | CLOSING DECEMBER 9, 2021

COLOURS & FINISHES TO BE SELECTED

This interior unit ENERGY STAR® Certified townhome features the optional
3 bedroom with 3PC ensuite layout

Urbandale's Standard Features

- Quartz Countertops in Kitchen, Ensuite & Main Bath • 39" Upper Kitchen Cabinetry
 - Soft close hinges and drawers in Kitchen & Bathrooms (locations specified by builder)
- Central Air Conditioning • Tiled Ensuite Shower Walls with Custom Glass Door

Urbandale's Smart Home Features

**Control everything from your phone with no subscriptions.
Discover Urbandale's smart home features as standard!**

- Video Doorbell • Programmable WiFi Thermostat • Four Smart Switches (locations specified by builder)
- WiFi Garage Door Opener • Convenient USB outlet in Kitchen & Master Bedroom (locations specified by builder)



All illustrations are artist concepts. Homes may be left of right versions. All dimensions are approximate. Actual usable floor space may vary from stated area. Structural/mechanical requirements may result in dimensional revisions and/or adjustments to layout. Plans and specifications are subject to change without notice. Exterior elevations are determined by Urbandale and may vary. ENERGY STAR® is an official mark of Natural Resources Canada. Used with permission. E. & O. E. 07/12/20

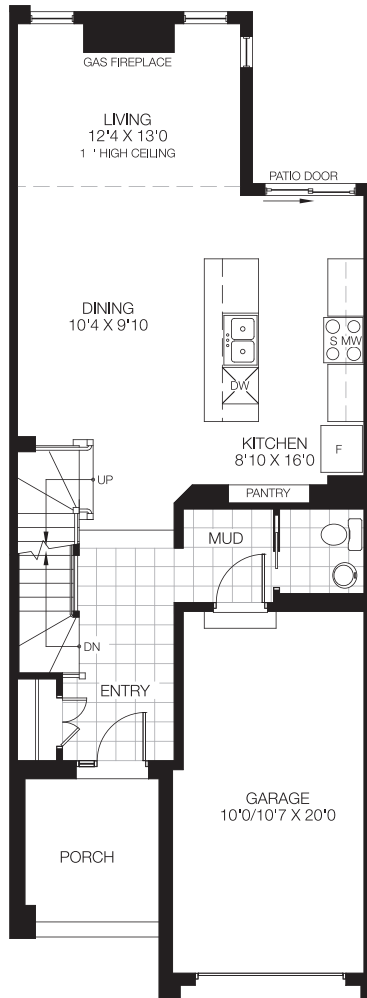


CALYPSO

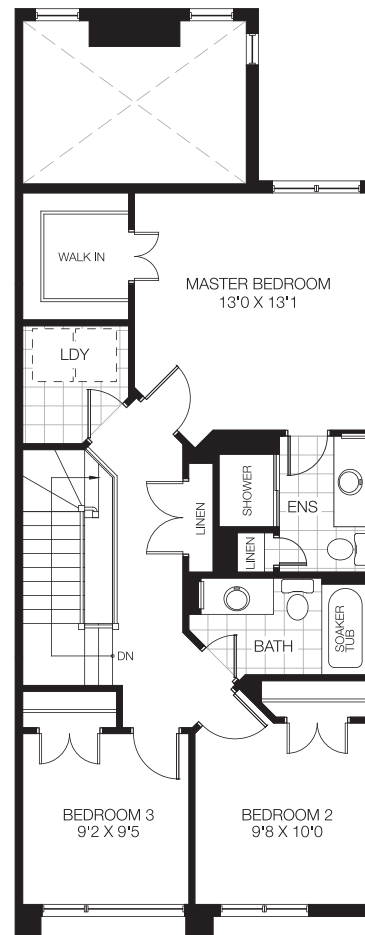
1,770 sq.ft.

Phase 115-2
Block 21 Lot 100

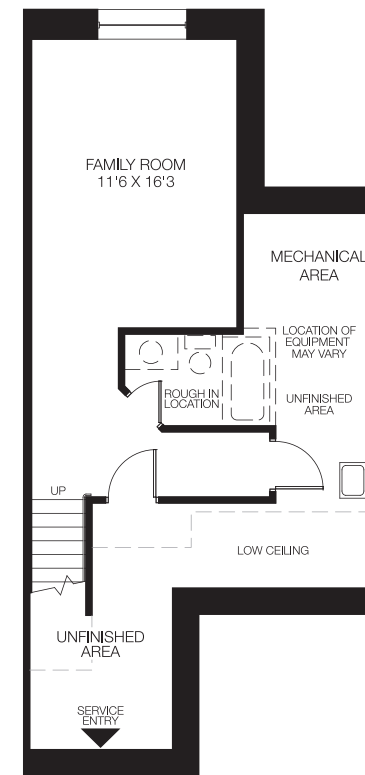
Riverside
South



GROUND FLOOR



OPT 1. BEDROOM FLOOR
3 BEDROOMS W/3PC ENSUITE



BASEMENT
FINISHED AREA 320 SQ.FT.



All illustrations are artist concepts. Homes may be left or right versions. All dimensions are approximate. Actual usable floor space may vary from stated area. Structural/mechanical requirements may result in dimensional revisions and/or adjustments to layout including bulkheads. Brick sides and rears are subject to site specifications, please see Sales Consultant for details. Plans and specifications are subject to change without notice. Exterior elevations are determined by Urbandale and may vary. The ENERGY STAR® for New Homes Standard is administered and promoted in Canada by Natural Resources Canada. E. & O. E. 07/12/20





DISCOVERY
2,098 sq.ft.

Phase 115-2
Block 21 Lot 101

Riverside
South

\$600,900

CLOSING DECEMBER 14, 2021

COLOURS & FINISHES TO BE SELECTED

This interior unit ENERGY STAR® Certified townhome features the standard
3 bedroom with computer nook layout

Urbandale's Standard Features

- Quartz Countertops in Kitchen, Ensuite & Main Bath • 39" Upper Kitchen Cabinetry
 - Soft close hinges and drawers in Kitchen & Bathrooms (locations specified by builder)
- Central Air Conditioning • Tiled Ensuite Shower Walls with Custom Glass Door

Urbandale's Smart Home Features

**Control everything from your phone with no subscriptions.
Discover Urbandale's smart home features as standard!**

- Video Doorbell • Programmable WiFi Thermostat • Four Smart Switches (locations specified by builder)
- WiFi Garage Door Opener • Convenient USB outlet in Kitchen & Master Bedroom (locations specified by builder)



All illustrations are artist concepts. Homes may be left of right versions. All dimensions are approximate. Actual usable floor space may vary from stated area. Structural/mechanical requirements may result in dimensional revisions and/or adjustments to layout. Plans and specifications are subject to change without notice. Exterior elevations are determined by Urbandale and may vary. ENERGY STAR® is an official mark of Natural Resources Canada. Used with permission. E. & O. E. 07/12/20

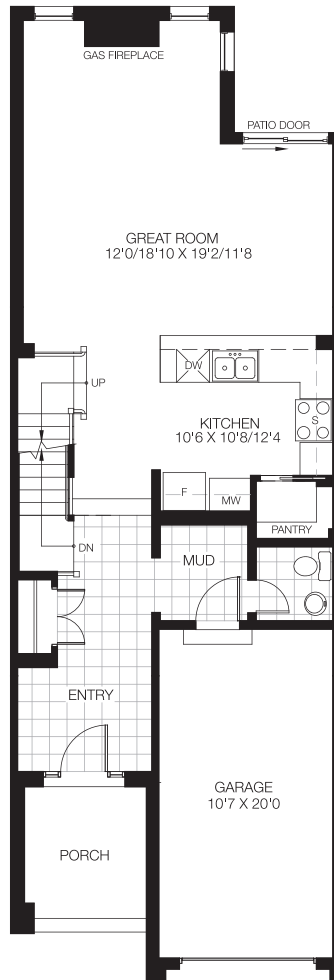


DISCOVERY

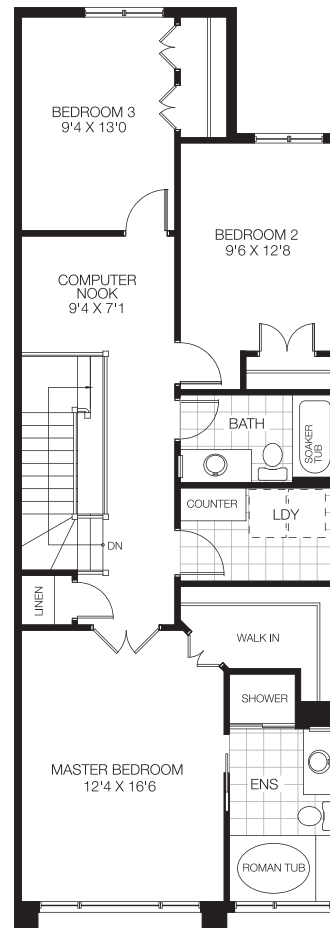
2,098 sq.ft.

Phase 115-2
Block 21 Lot 101

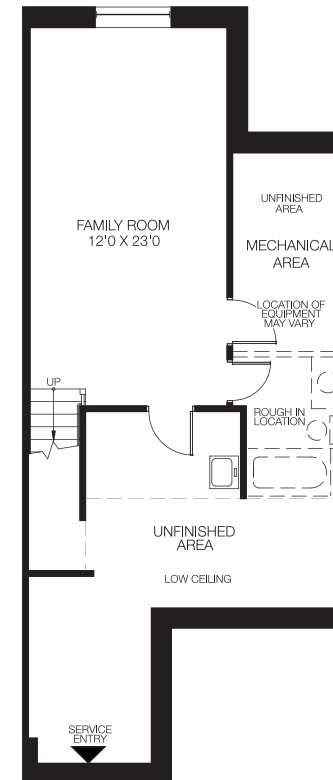
Riverside
South



GROUND FLOOR



BEDROOM FLOOR
3 BEDROOMS
W/COMPUTER NOOK



BASEMENT
FINISHED AREA 310 SQ.FT.



All illustrations are artist concepts. Homes may be left or right versions. All dimensions are approximate. Actual usable floor space may vary from stated area. Structural/mechanical requirements may result in dimensional revisions and/or adjustments to layout including bulkheads. Brick sides and rears are subject to site specifications, please see Sales Consultant for details. Plans and specifications are subject to change without notice. Exterior elevations are determined by Urbandale and may vary. The ENERGY STAR® for New Homes Standard is administered and promoted in Canada by Natural Resources Canada. E. & O. E. 07/12/20





ATLANTIS II

2,426 sq.ft.

Phase 115-2
Block 21 Lot 102

Riverside
South

\$655,598.69 | CLOSING DECEMBER 16, 2021

COLOURS & FINISHES TO BE SELECTED

This end unit ENERGY STAR® Certified townhome features the optional 4 bedroom with loft layout and luxury ensuite includes an oak hardwood staircase from ground floor to second floor

Urbandale's Standard Features

- Quartz Countertops in Kitchen, Ensuite & Main Bath • 39" Upper Kitchen Cabinetry
 - Soft close hinges and drawers in Kitchen & Bathrooms (locations specified by builder)
- Central Air Conditioning • Tiled Ensuite Shower Walls with Custom Glass Door

Urbandale's Smart Home Features

Control everything from your phone with no subscriptions.
Discover Urbandale's smart home features as standard!

- Video Doorbell • Programmable WiFi Thermostat • Four Smart Switches (locations specified by builder)
- WiFi Garage Door Opener • Convenient USB outlet in Kitchen & Master Bedroom (locations specified by builder)



All illustrations are artist concepts. Homes may be left of right versions. All dimensions are approximate. Actual usable floor space may vary from stated area. Structural/mechanical requirements may result in dimensional revisions and/or adjustments to layout. Plans and specifications are subject to change without notice. Exterior elevations are determined by Urbandale and may vary. ENERGY STAR® is an official mark of Natural Resources Canada. Used with permission. E. & O. E. 07/12/20

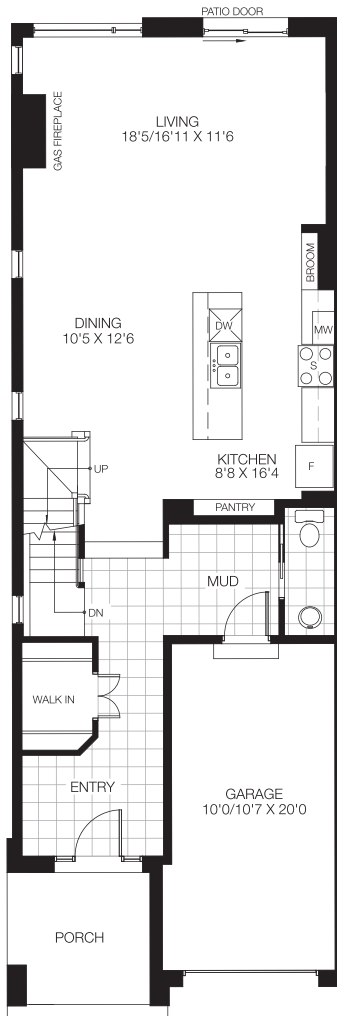


ATLANTIS II

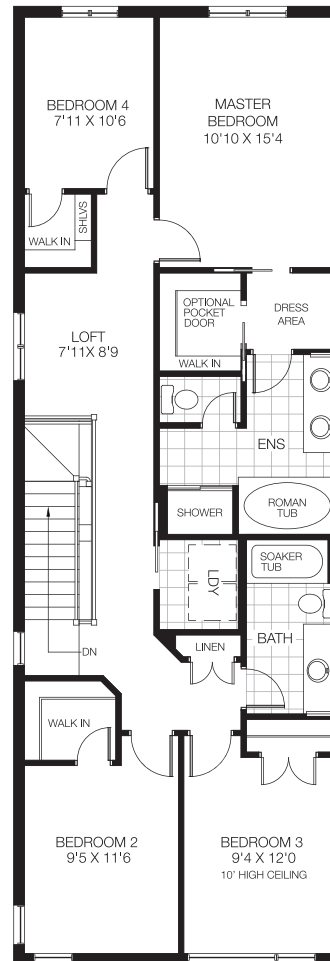
2,426 sq.ft.

Phase 115-2
Block 21 Lot 102

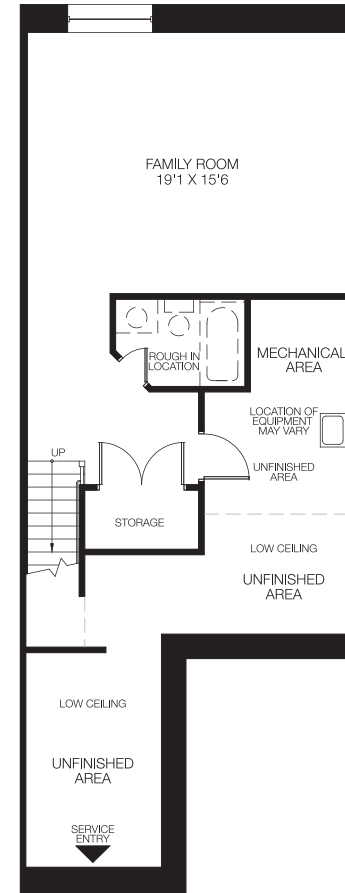
Riverside
South



GROUND FLOOR



OPT 1. BEDROOM FLOOR
4 BEDROOMS W/LOFT



BASEMENT
FINISHED AREA 418 SQ.FT.



All illustrations are artist concepts. Homes may be left or right versions. All dimensions are approximate. Actual usable floor space may vary from stated area. Structural/mechanical requirements may result in dimensional revisions and/or adjustments to layout including bulkheads. Brick sides and rears are subject to site specifications, please see Sales Consultant for details. Plans and specifications are subject to change without notice. Exterior elevations are determined by Urbandale and may vary. The ENERGY STAR® for New Homes Standard is administered and promoted in Canada by Natural Resources Canada. E. & O. E. 07/12/20

