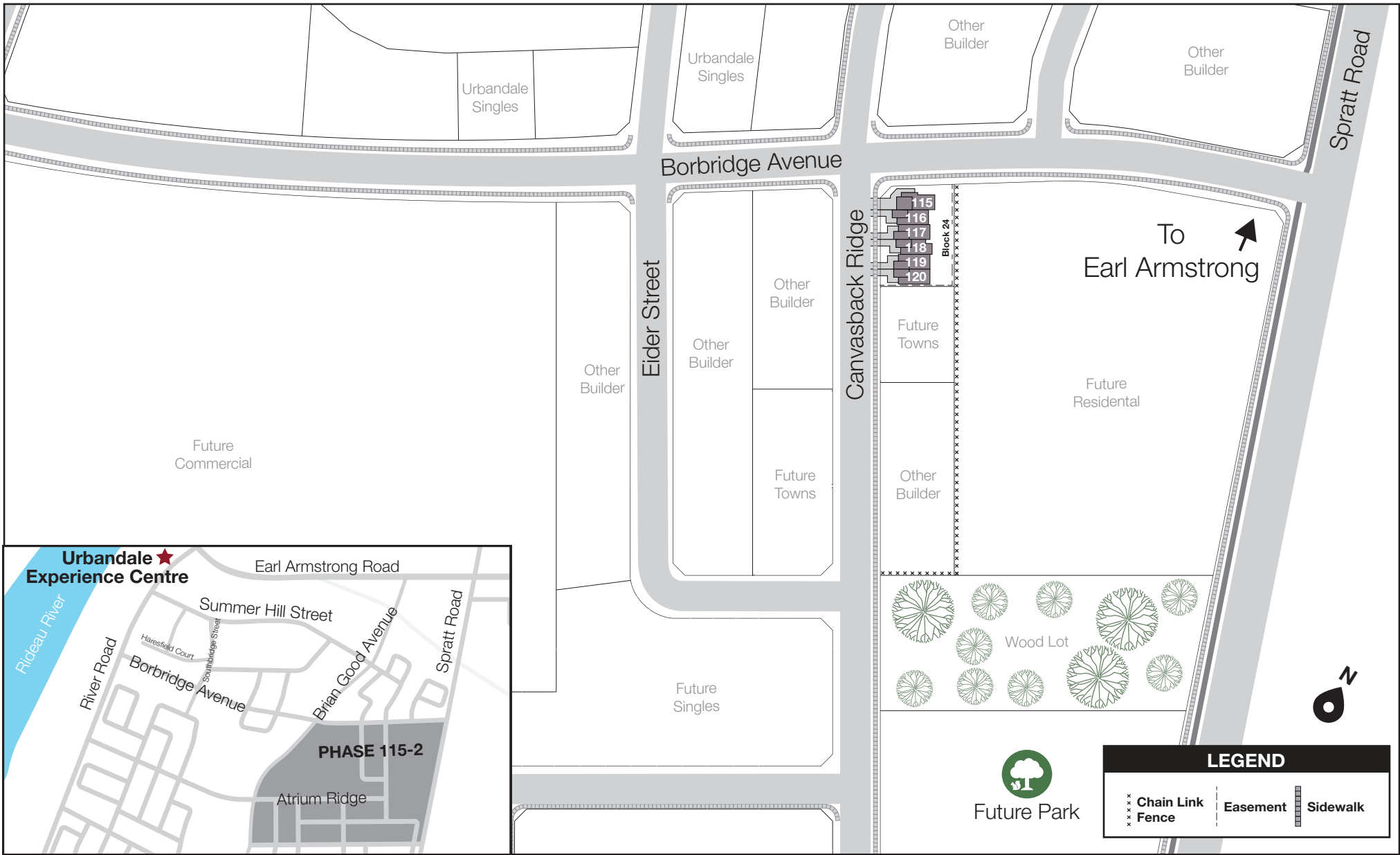


# Phase 115-2 Townhomes



Conceptual drawing for marketing purposes only, pending final approval by planning authorities. Lot/location premiums may apply and do not include H.S.T. Please see your Sales Consultant for details. Subject to change without notice. E. & O. E. 26/08/20



## PHASE 115-2 ENERGY STAR® TOWNHOMES

	SQ.FT.	BEDROOMS	PRICED FROM
<b>APOLLO</b> (incl. 281 Sq. Ft. finished basement)	1,765	3	
Interior			<b>\$527,900</b>
End*			<b>\$552,900</b>
<b>CALYPSO</b> (incl. 320 Sq. Ft. finished basement)	1,770	3	
Interior			<b>\$534,900</b>
End*			<b>\$559,900</b>
<b>DISCOVERY</b> (incl. 310 Sq. Ft. finished basement)	2,098	3	
Interior			<b>\$560,900</b>
End*			<b>\$585,900</b>
<b>ENDEAVOUR</b> (incl. 351 Sq. Ft. finished basement)	2,088	3 w/loft	
Interior			<b>\$562,900</b>
End*			<b>\$587,900</b>
<b>ATLANTIS</b> (incl. 418 Sq. Ft. finished basement)	2,324	3 w/loft	
Interior			<b>\$576,900</b>
End*			<b>\$601,900</b>
<b>ATLANTIS II</b> (incl. 418 Sq. Ft. finished basement)	2,426	3 or 4 w/loft	
Interior			<b>\$582,900</b>
End*			<b>\$607,900</b>

**\*End units include a 10' ceiling in one front facing bedroom with feature window & additional windows on side elevation, as per plan.**

## END UNIT TOWNHOME WITH DOUBLE CAR GARAGE

<b>SANTA MARIA</b> (incl. 274 Sq. Ft. finished basement)	2,077	3	<b>\$649,900</b>
--	-------	---	------------------

***Riverside***  
 South

### CONTACT INFORMATION

Cheryl Barr & Kathleen Michael

**T: 613-822-2190**

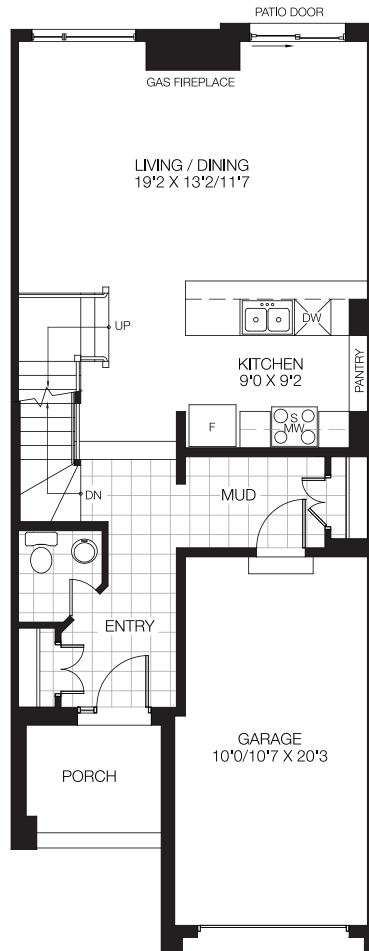
**E: [riversouth@urbandale.com](mailto:riversouth@urbandale.com)**



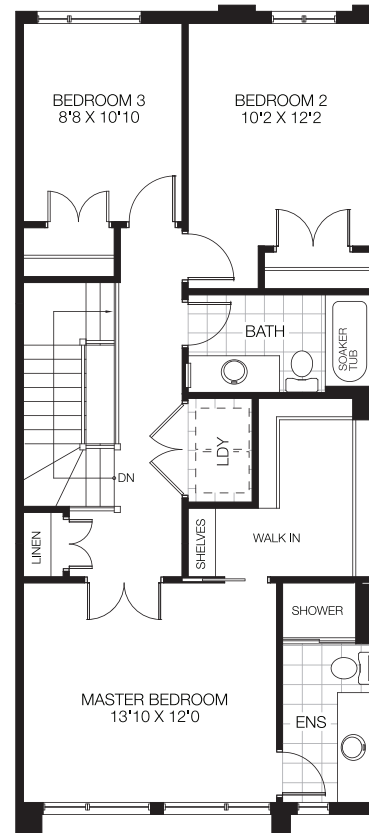


# APOLLO

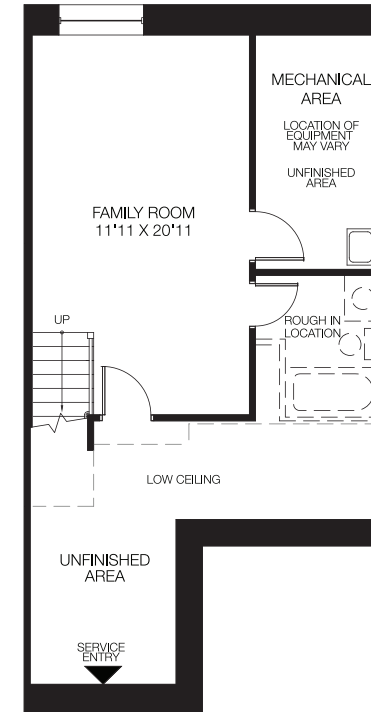
1,765 sq.ft. Interior Unit



GROUND FLOOR



BEDROOM FLOOR  
3 BEDROOMS



BASEMENT  
FINISHED AREA 281 SQ.FT.



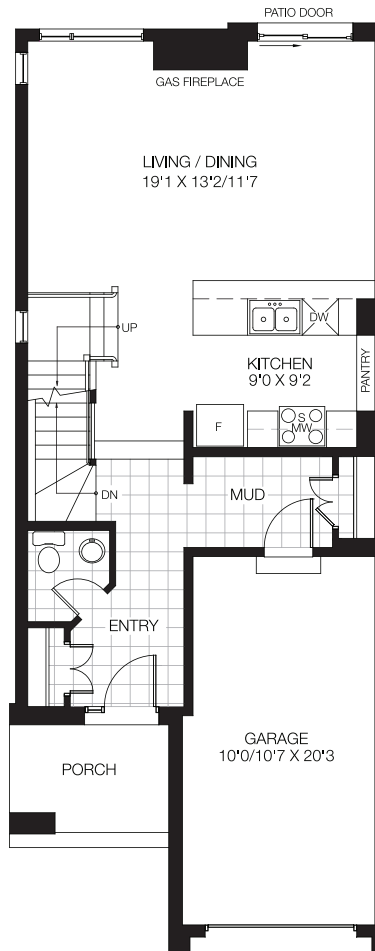
All dimensions are approximate. Actual usable floor space may vary from stated area. Structural/mechanical requirements may result in dimensional revisions and/or adjustments. Brick sides and rears are subject to site specifications. Plans and specifications are subject to change without notice. The ENERGY STAR® for New Homes Standard is administered and promoted in Canada by Natural Resources Canada. E. & O. E. 30/01/19



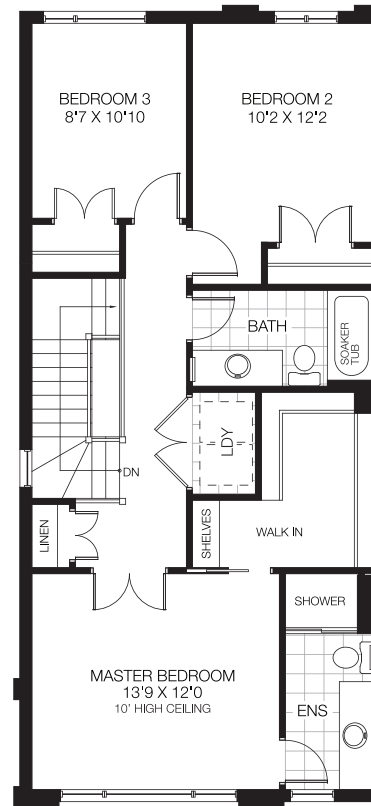


# APOLLO

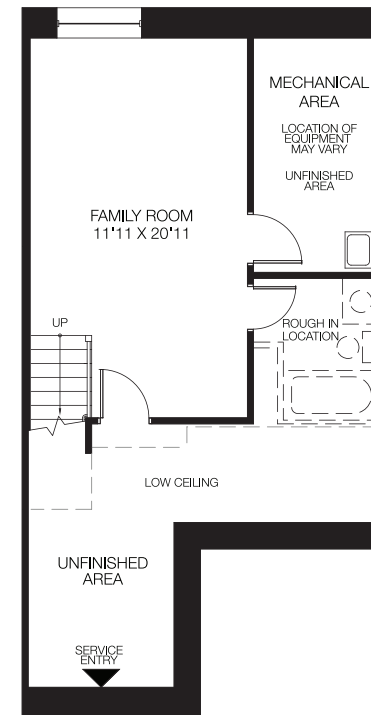
1,765 sq.ft. End Unit



GROUND FLOOR



BEDROOM FLOOR  
3 BEDROOMS



BASEMENT  
FINISHED AREA 281 SQ.FT.



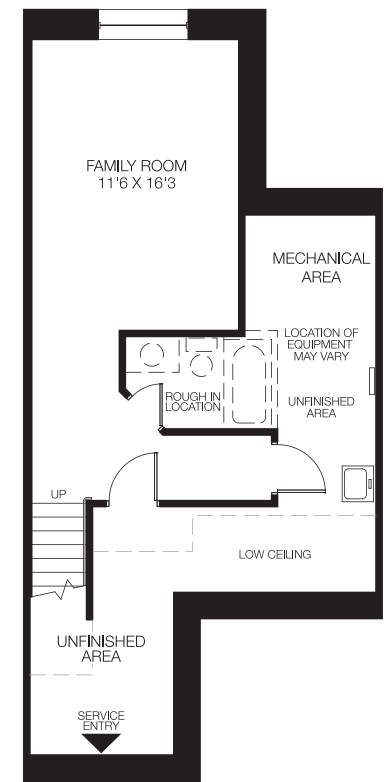
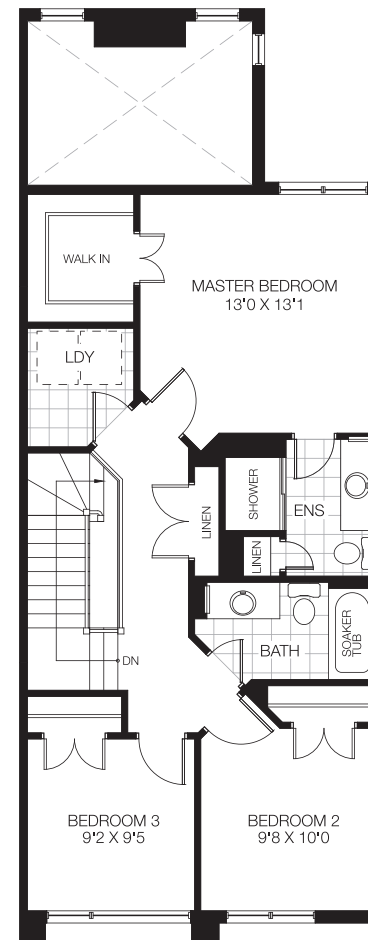
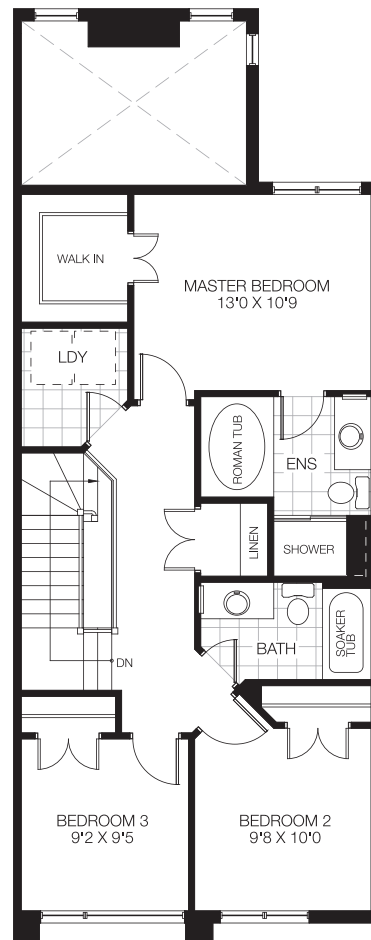
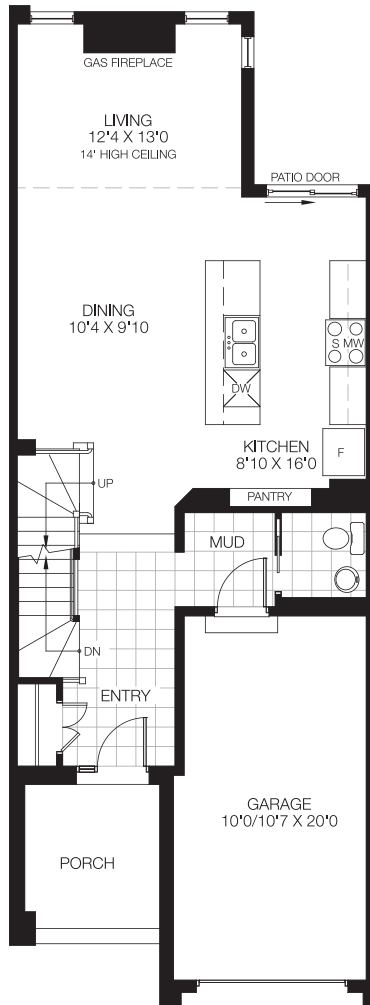
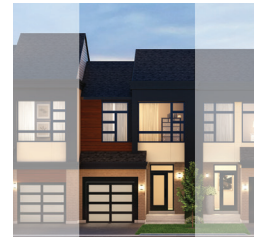
All dimensions are approximate. Actual usable floor space may vary from stated area. Structural/mechanical requirements may result in dimensional revisions and/or adjustments. Brick sides and rears are subject to site specifications. Plans and specifications are subject to change without notice. The ENERGY STAR® for New Homes Standard is administered and promoted in Canada by Natural Resources Canada. E. & O. E. 30/01/19





# CALYPSO

1,770 sq.ft. Interior Unit



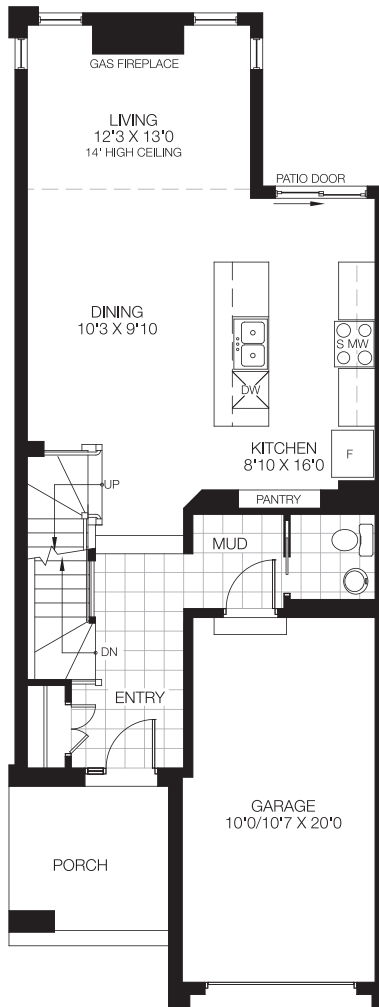
All dimensions are approximate. Actual usable floor space may vary from stated area. Structural/mechanical requirements may result in dimensional revisions and/or adjustments. Brick sides and rears are subject to site specifications. Plans and specifications are subject to change without notice. The ENERGY STAR® for New Homes Standard is administered and promoted in Canada by Natural Resources Canada. E. & O. E. 30/01/19



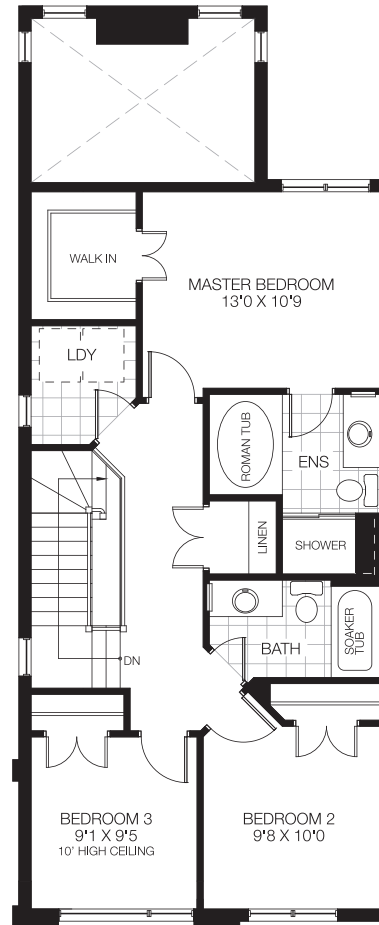


# CALYPSO

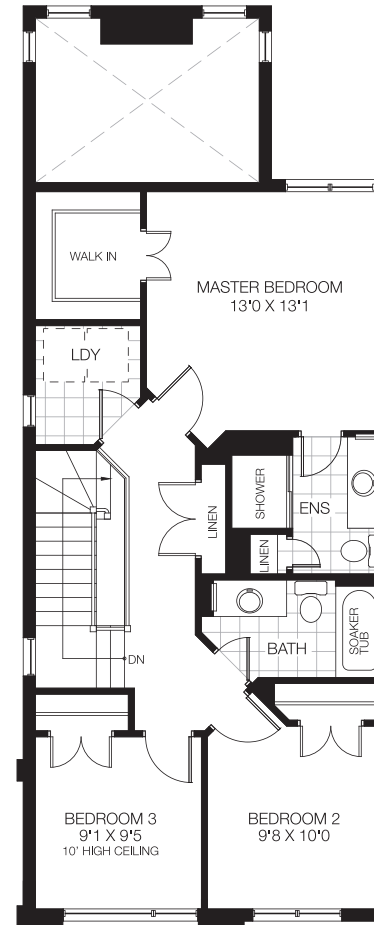
1,770 sq.ft. End Unit



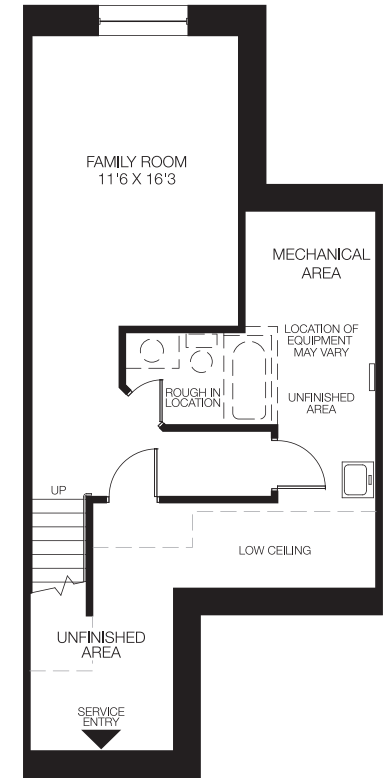
GROUND FLOOR



BEDROOM FLOOR  
3 BEDROOMS W/4PC ENSUITE



OPT 1. BEDROOM FLOOR  
3 BEDROOMS W/3PC ENSUITE



BASEMENT  
FINISHED AREA 320 SQ.FT.

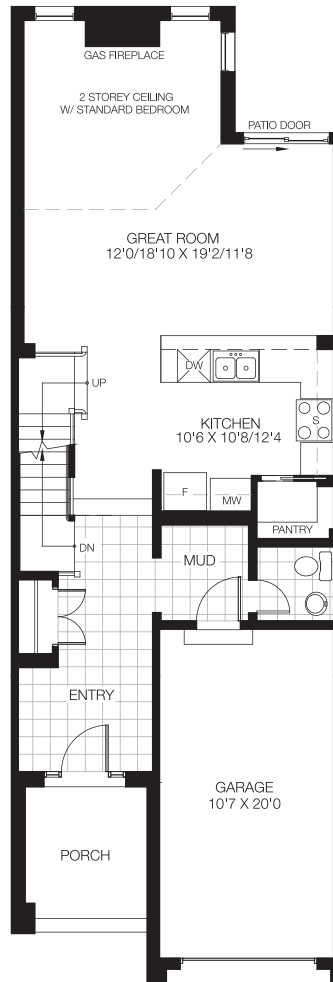


All dimensions are approximate. Actual usable floor space may vary from stated area. Structural/mechanical requirements may result in dimensional revisions and/or adjustments. Brick sides and rears are subject to site specifications. Plans and specifications are subject to change without notice. The ENERGY STAR® for New Homes Standard is administered and promoted in Canada by Natural Resources Canada. E. & O. E. 30/01/19

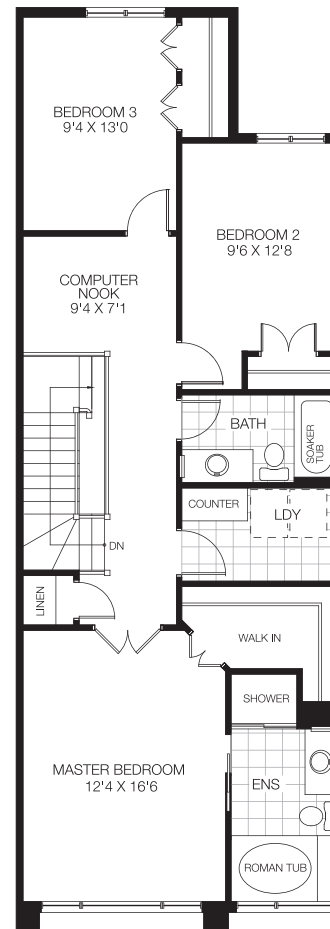




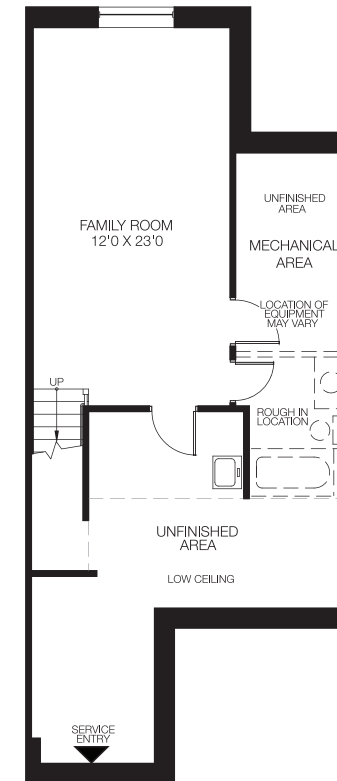
# DISCOVERY 2,098 sq.ft. Interior Unit



GROUND FLOOR



BEDROOM FLOOR  
3 BEDROOMS W/COMPUTER NOOK



BASEMENT  
FINISHED AREA 310 SQ.FT.



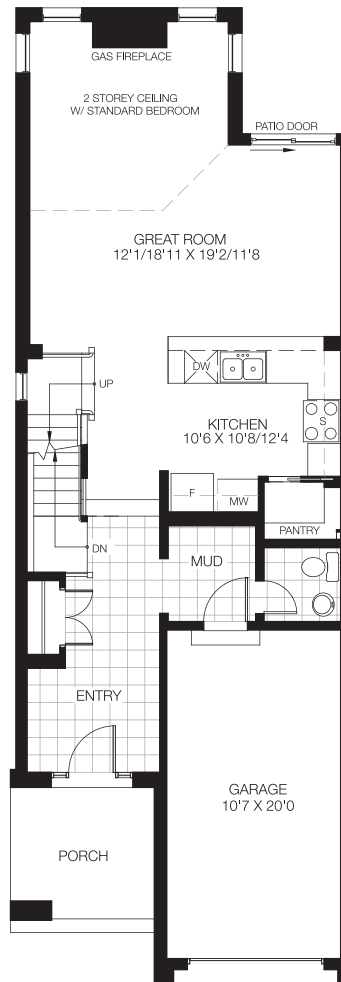
All dimensions are approximate. Actual usable floor space may vary from stated area. Structural/mechanical requirements may result in dimensional revisions and/or adjustments. Brick sides and rears are subject to site specifications. Plans and specifications are subject to change without notice. The ENERGY STAR® for New Homes Standard is administered and promoted in Canada by Natural Resources Canada. E. & O. E. 30/01/19



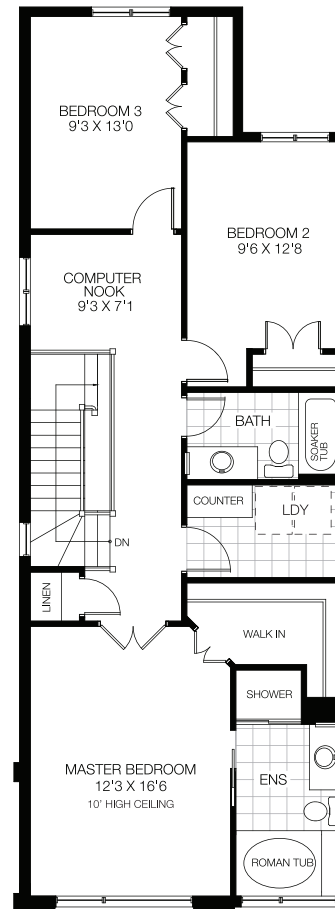


# DISCOVERY

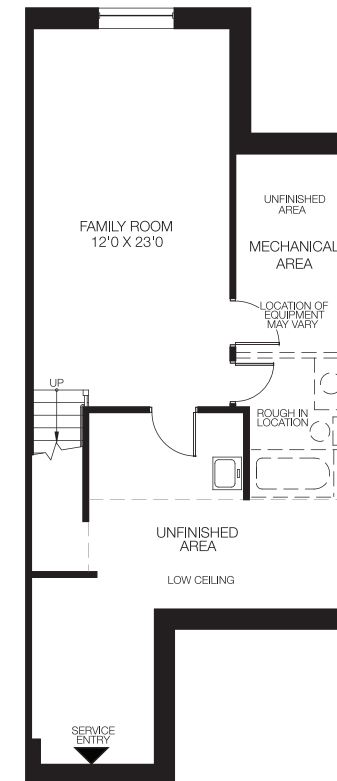
2,098 sq.ft. End Unit



GROUND FLOOR



BEDROOM FLOOR  
3 BEDROOMS W/COMPUTER NOOK



BASEMENT  
FINISHED AREA 310 SQ.FT.



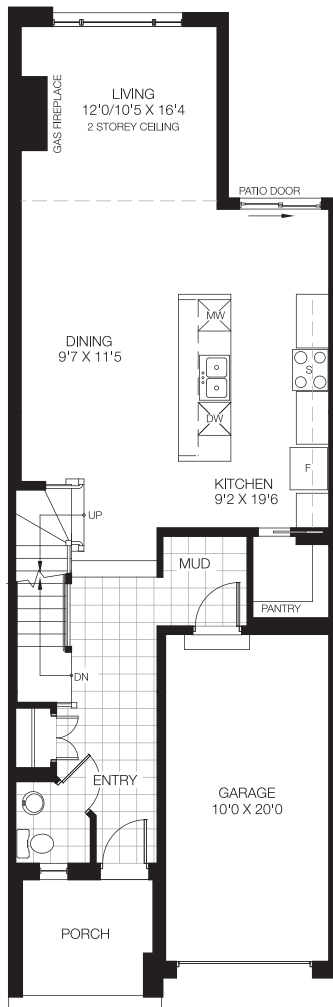
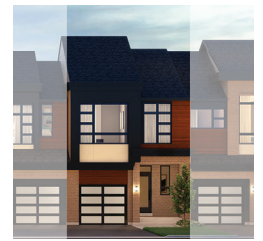
All dimensions are approximate. Actual usable floor space may vary from stated area. Structural/mechanical requirements may result in dimensional revisions and/or adjustments. Brick sides and rears are subject to site specifications. Plans and specifications are subject to change without notice. The ENERGY STAR® for New Homes Standard is administered and promoted in Canada by Natural Resources Canada. E. & O. E. 30/01/19



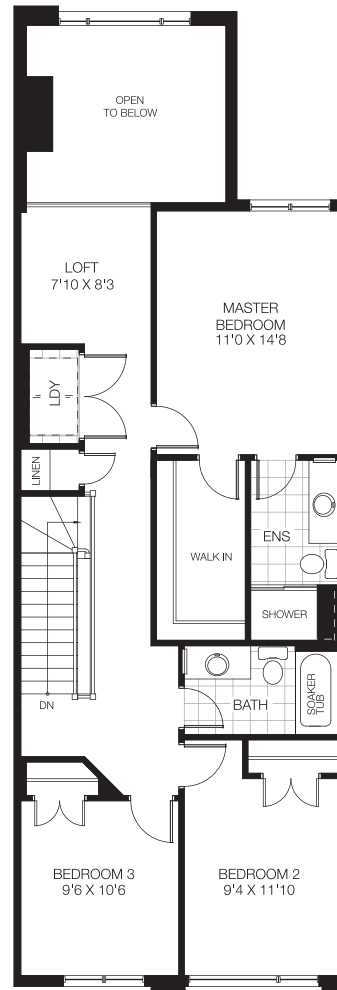


# ENDEAVOUR

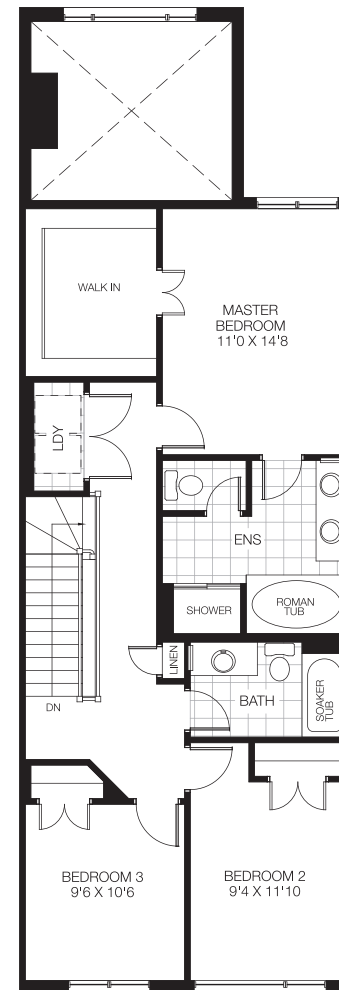
2,088 sq.ft. Interior Unit



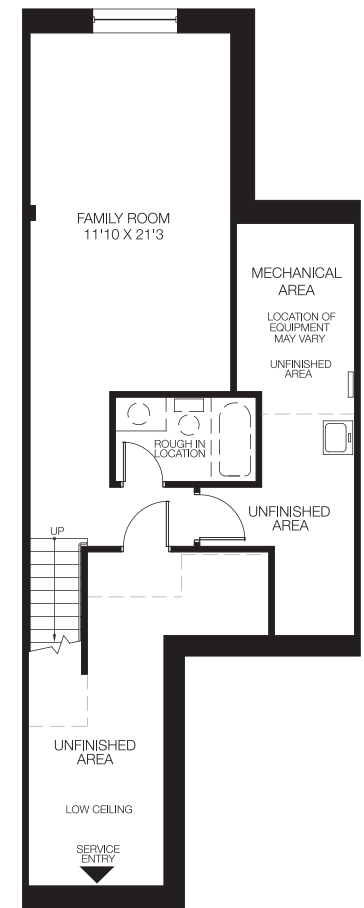
GROUND FLOOR



BEDROOM FLOOR  
3 BEDROOMS W/LOFT



OPT 1. BEDROOM FLOOR  
3 BEDROOMS W/LUXURY ENSUITE



BASEMENT  
FINISHED AREA 351 SQ.FT.



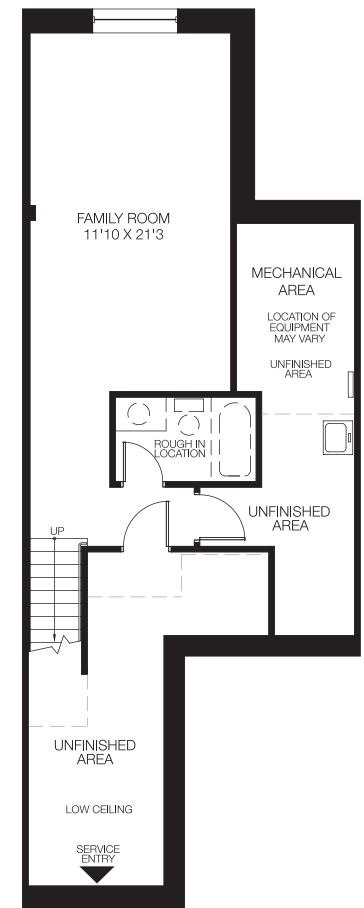
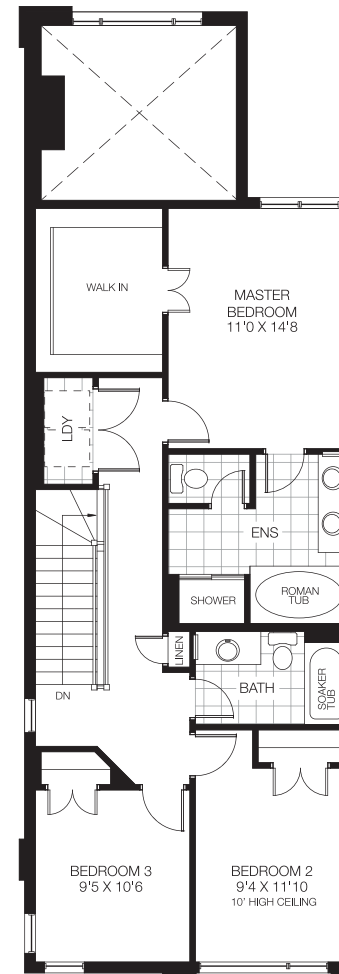
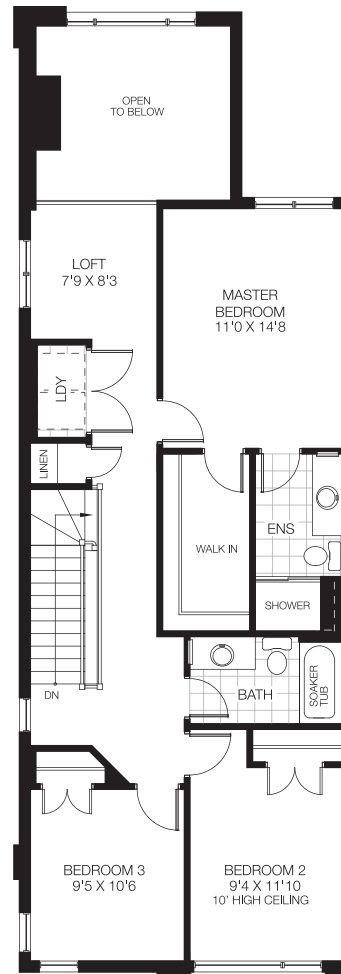
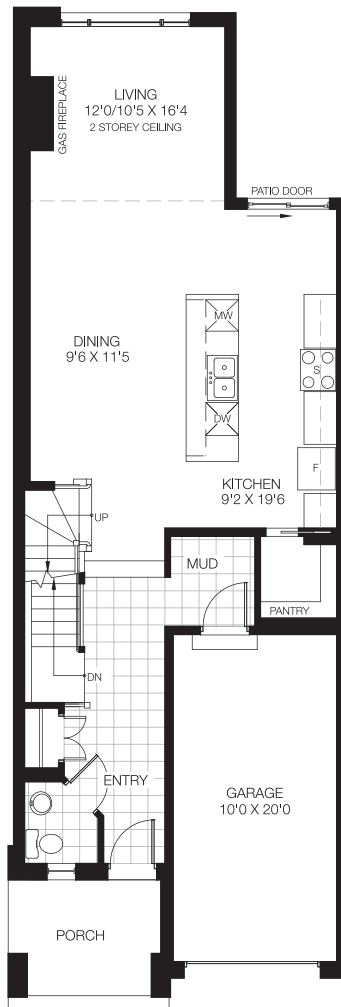
All dimensions are approximate. Actual usable floor space may vary from stated area. Structural/mechanical requirements may result in dimensional revisions and/or adjustments. Brick sides and rears are subject to site specifications. Plans and specifications are subject to change without notice. The ENERGY STAR® for New Homes Standard is administered and promoted in Canada by Natural Resources Canada. E. & O. E. 30/01/19





# ENDEAVOUR

2,088 sq.ft. End Unit



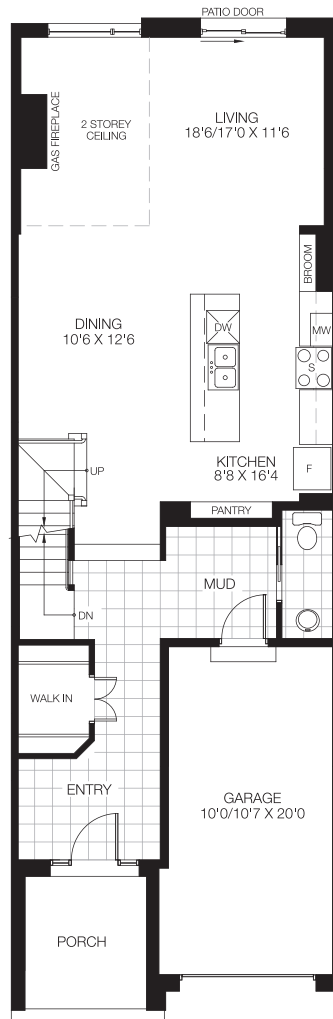
All dimensions are approximate. Actual usable floor space may vary from stated area. Structural/mechanical requirements may result in dimensional revisions and/or adjustments. Brick sides and rears are subject to site specifications. Plans and specifications are subject to change without notice. The ENERGY STAR® for New Homes Standard is administered and promoted in Canada by Natural Resources Canada. E. & O. E. 30/01/19



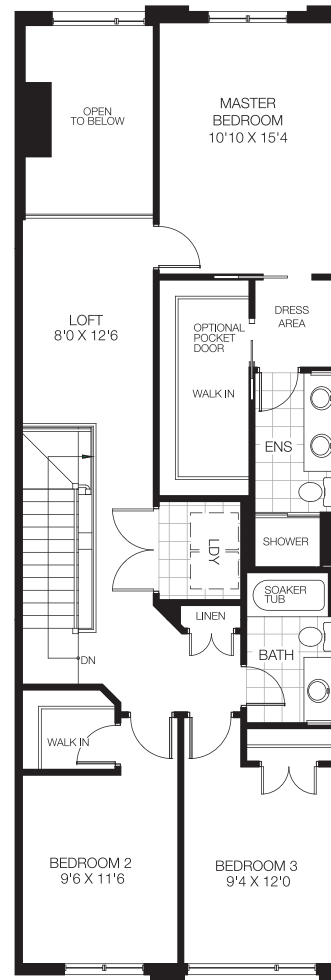


# ATLANTIS

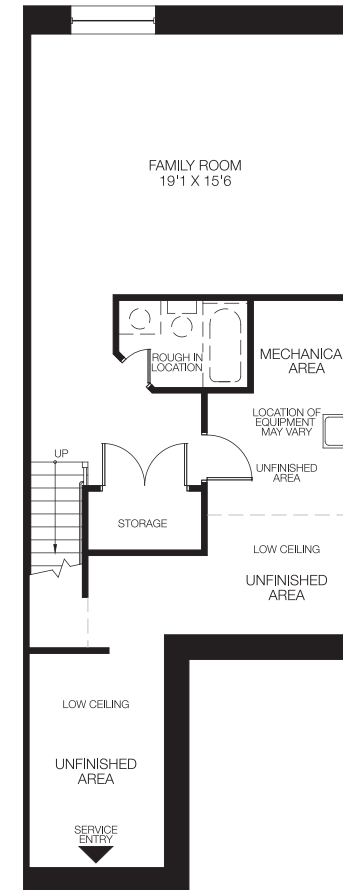
2,324 sq.ft. Interior Unit



GROUND FLOOR



BEDROOM FLOOR  
3 BEDROOMS W/LOFT



BASEMENT  
FINISHED AREA 418 SQ.FT.



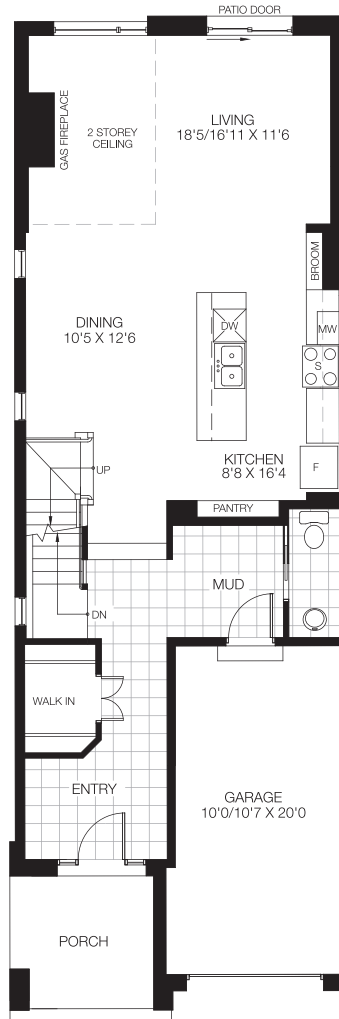
All dimensions are approximate. Actual usable floor space may vary from stated area. Structural/mechanical requirements may result in dimensional revisions and/or adjustments. Brick sides and rears are subject to site specifications. Plans and specifications are subject to change without notice. The ENERGY STAR® for New Homes Standard is administered and promoted in Canada by Natural Resources Canada. E. & O. E. 30/01/19



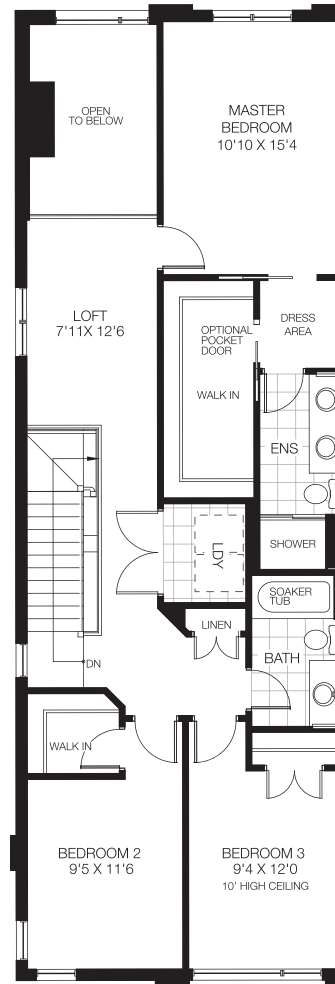


# ATLANTIS

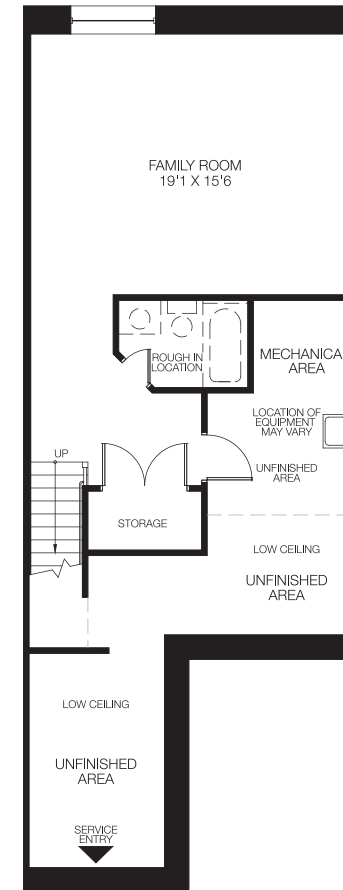
2,324 sq.ft. End Unit



GROUND FLOOR



BEDROOM FLOOR  
3 BEDROOMS W/LOFT



BASEMENT  
FINISHED AREA 418 SQ.FT.



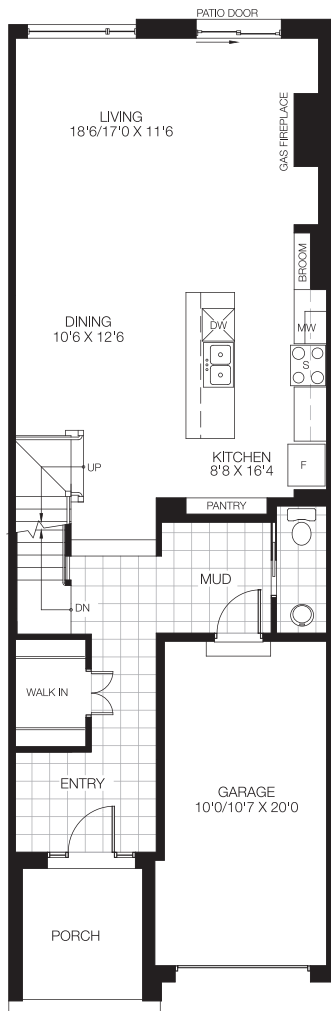
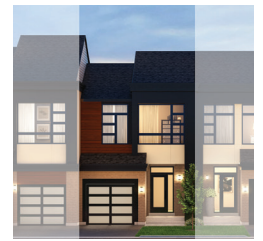
All dimensions are approximate. Actual usable floor space may vary from stated area. Structural/mechanical requirements may result in dimensional revisions and/or adjustments. Brick sides and rears are subject to site specifications. Plans and specifications are subject to change without notice. The ENERGY STAR® for New Homes Standard is administered and promoted in Canada by Natural Resources Canada. E. & O. E. 30/01/19



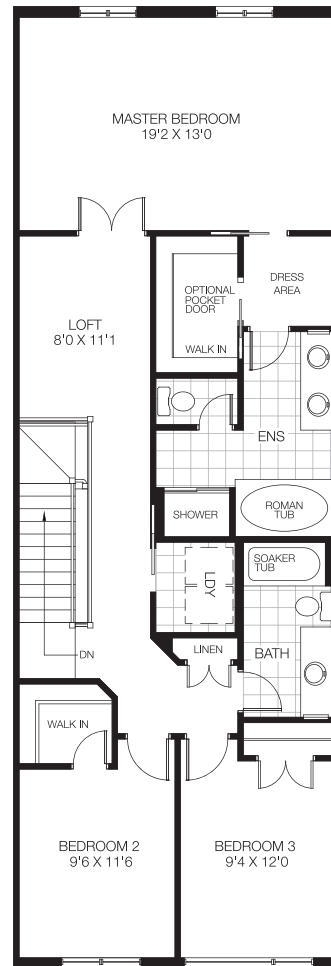


# ATLANTIS II

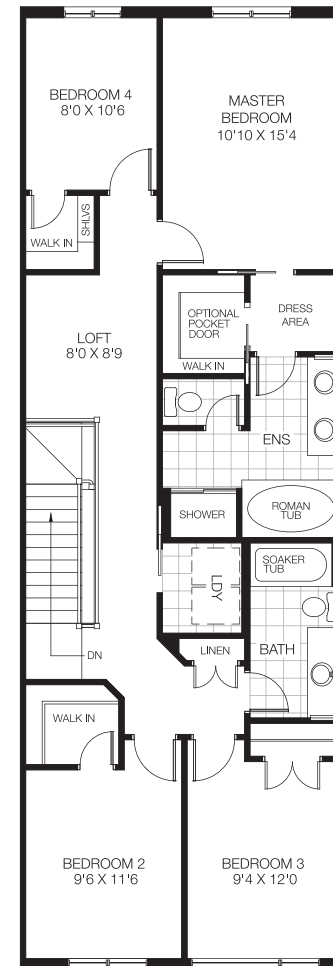
2,426 sq.ft. Interior Unit



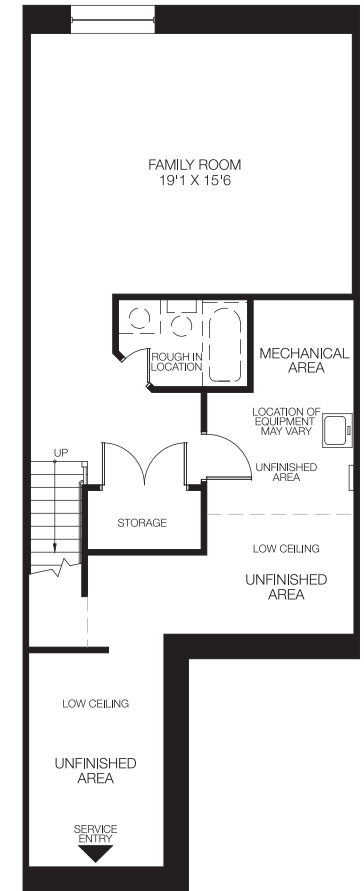
GROUND FLOOR



BEDROOM FLOOR  
3 BEDROOMS W/LUXURY MASTER



OPT 1. BEDROOM FLOOR  
4 BEDROOMS W/LOFT



BASEMENT  
FINISHED AREA 418 SQ.FT.



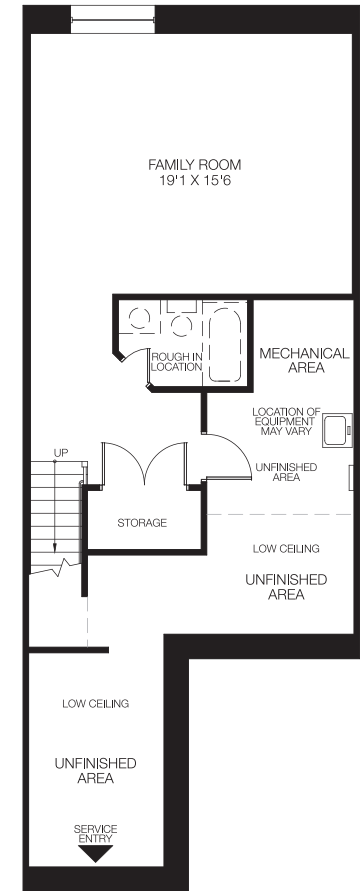
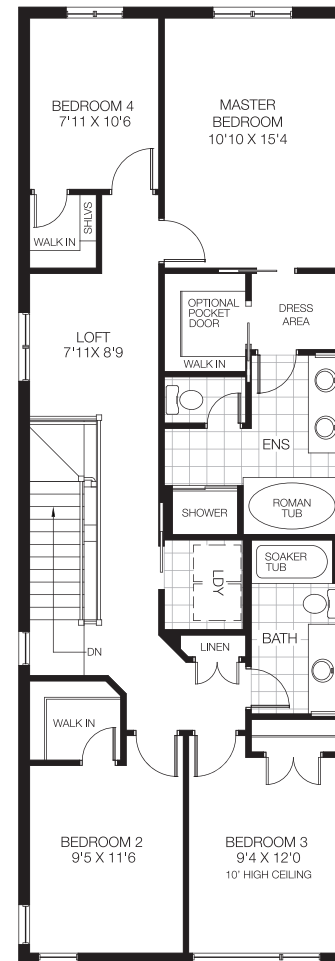
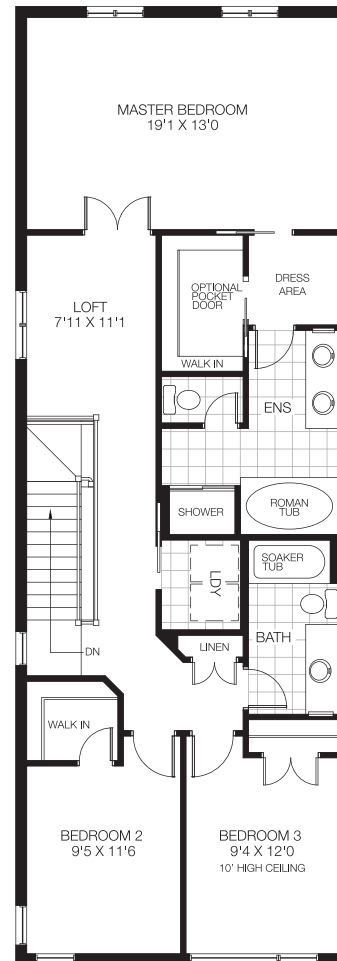
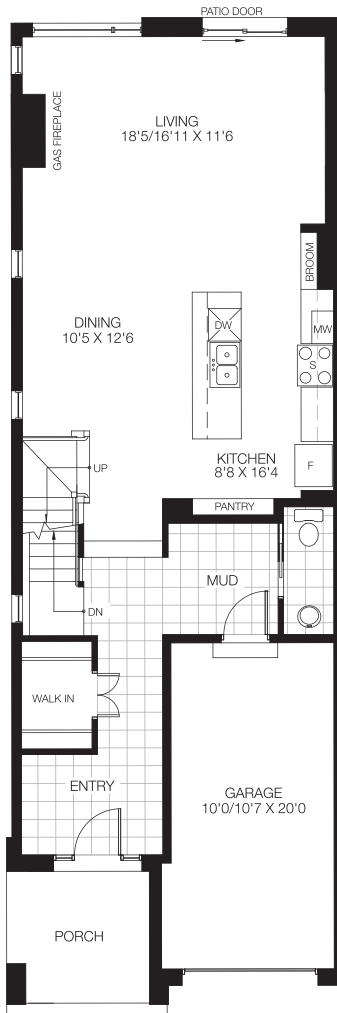
All dimensions are approximate. Actual usable floor space may vary from stated area. Structural/mechanical requirements may result in dimensional revisions and/or adjustments. Brick sides and rears are subject to site specifications. Plans and specifications are subject to change without notice. The ENERGY STAR® for New Homes Standard is administered and promoted in Canada by Natural Resources Canada. E. & O. E. 30/01/19





# ATLANTIS II

2,426 sq.ft. End Unit



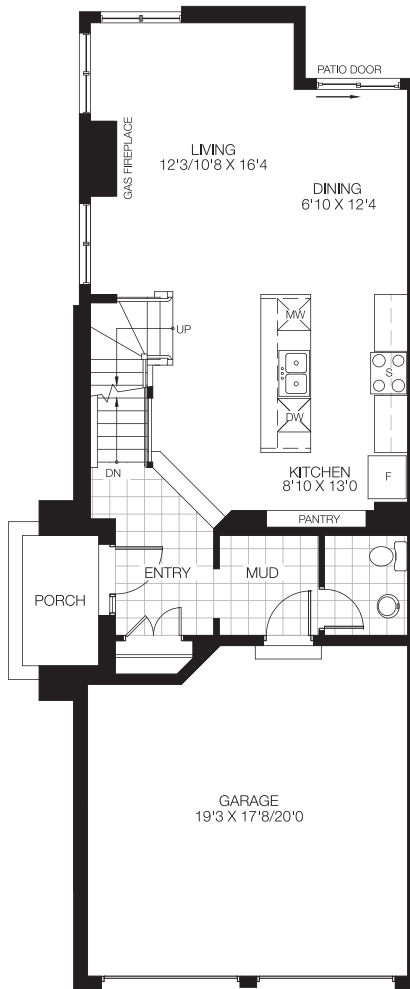
All dimensions are approximate. Actual usable floor space may vary from stated area. Structural/mechanical requirements may result in dimensional revisions and/or adjustments. Brick sides and rears are subject to site specifications. Plans and specifications are subject to change without notice. The ENERGY STAR® for New Homes Standard is administered and promoted in Canada by Natural Resources Canada. E. & O. E. 30/01/19



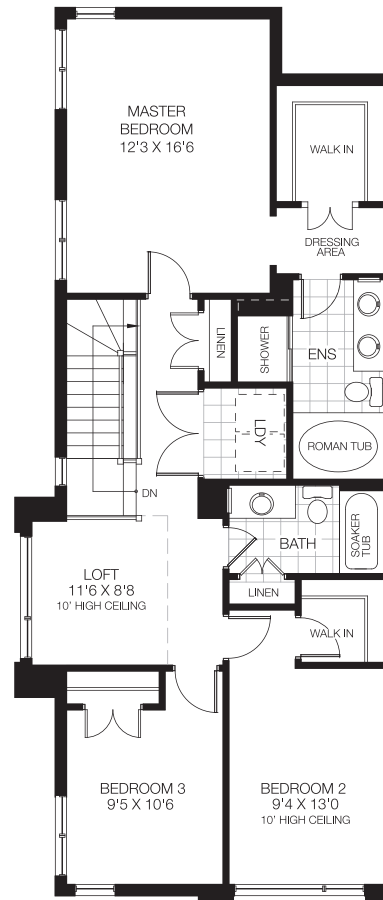


# SANTA MARIA

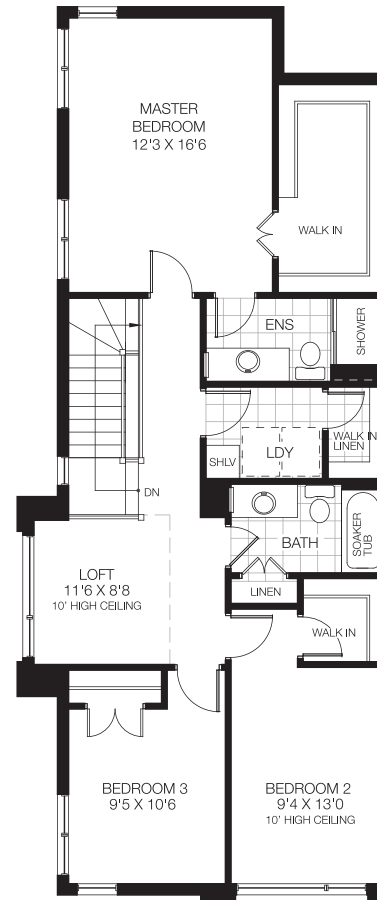
2,077 sq.ft. End Unit



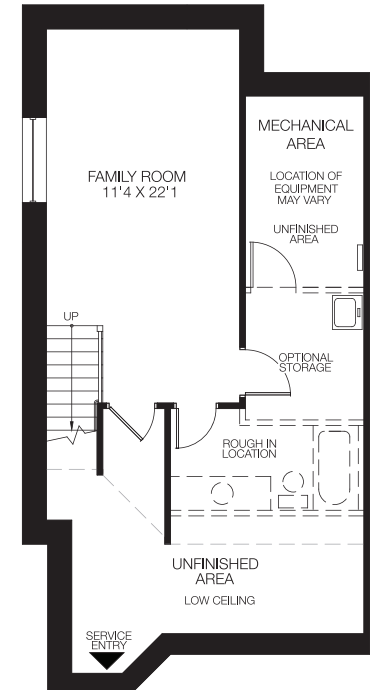
GROUND FLOOR



BEDROOM FLOOR  
3 BEDROOMS W/4PC ENSUITE



OPT 1. BEDROOM FLOOR  
3 BEDROOMS W/3PC ENSUITE



BASEMENT  
FINISHED AREA 274 SQ.FT.



All dimensions are approximate. Actual usable floor space may vary from stated area. Structural/mechanical requirements may result in dimensional revisions and/or adjustments. Brick sides and rears are subject to site specifications. Plans and specifications are subject to change without notice. The ENERGY STAR® for New Homes Standard is administered and promoted in Canada by Natural Resources Canada. E. & O. E. 30/01/19

