

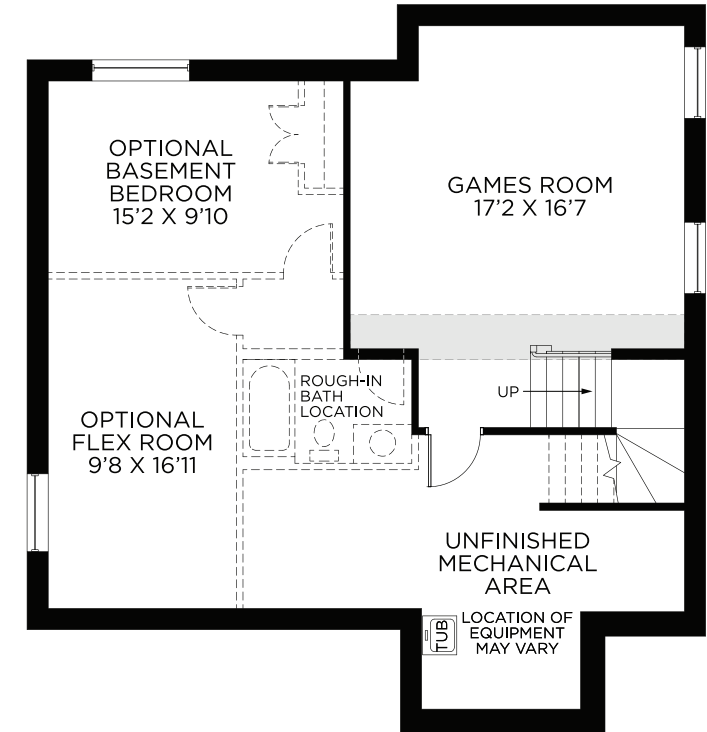
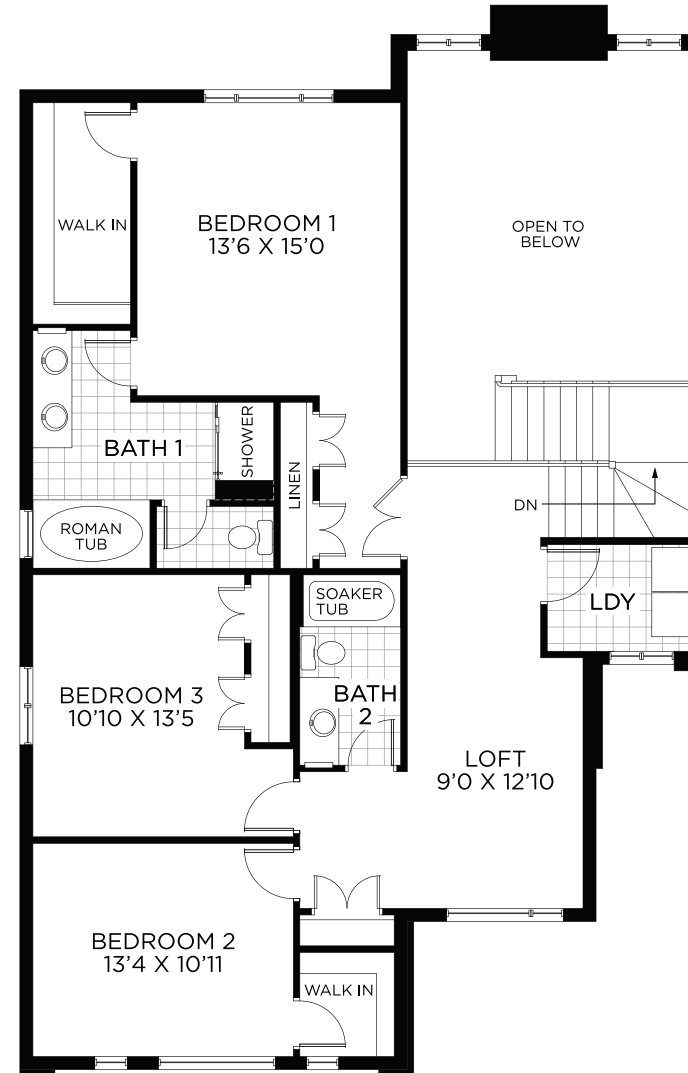
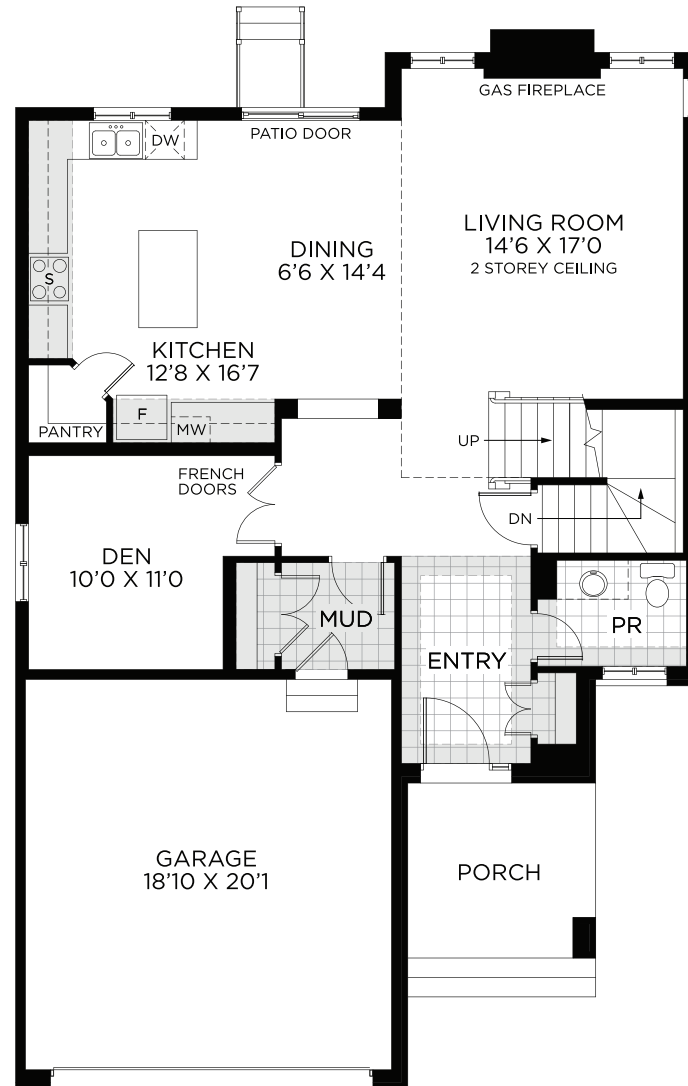


NANAIMO

2,404 SQ.FT.

44' DESIGN

PACIFIC SERIES



GROUND FLOOR

BEDROOM FLOOR

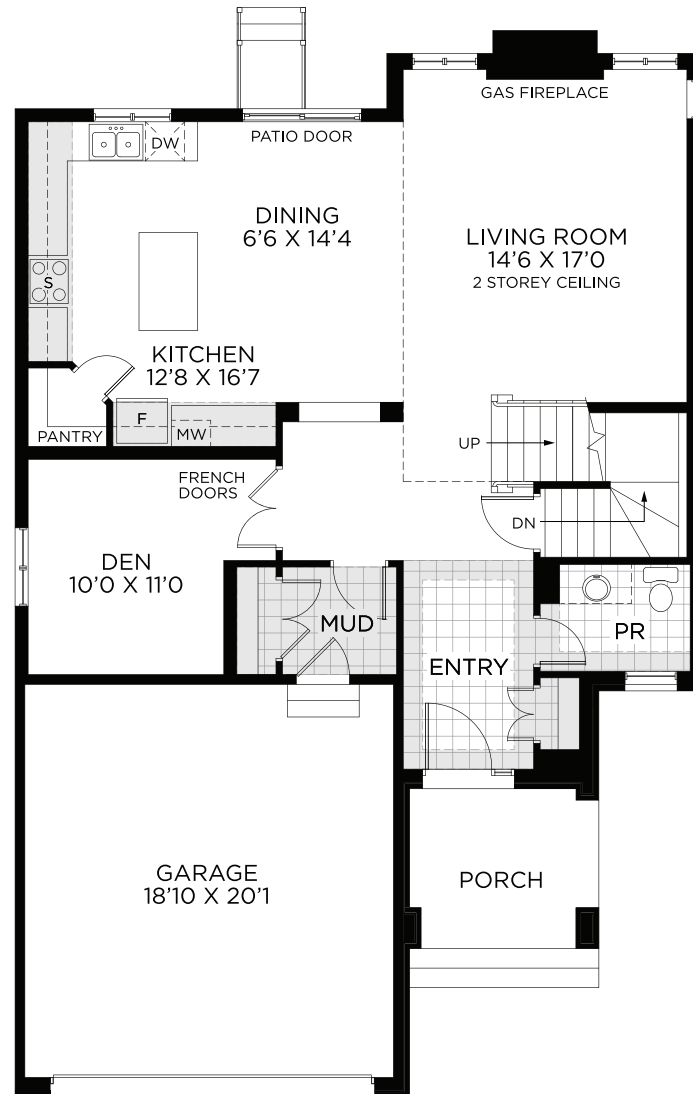
BASEMENT - FINISHED AREA 368 SQ.FT.



2,417 SQ.FT.

44'DESIGN

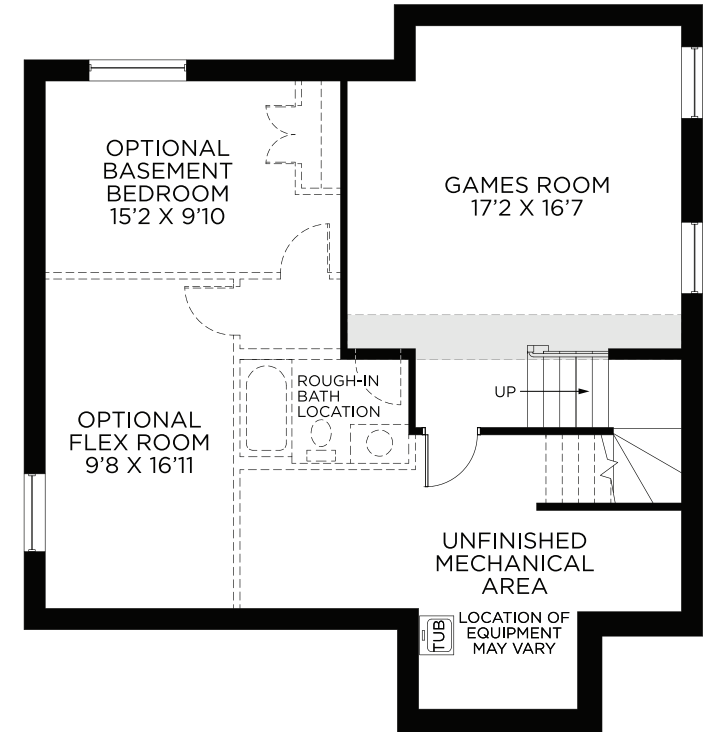
HORIZON SERIES



GROUND FLOOR



BEDROOM FLOOR



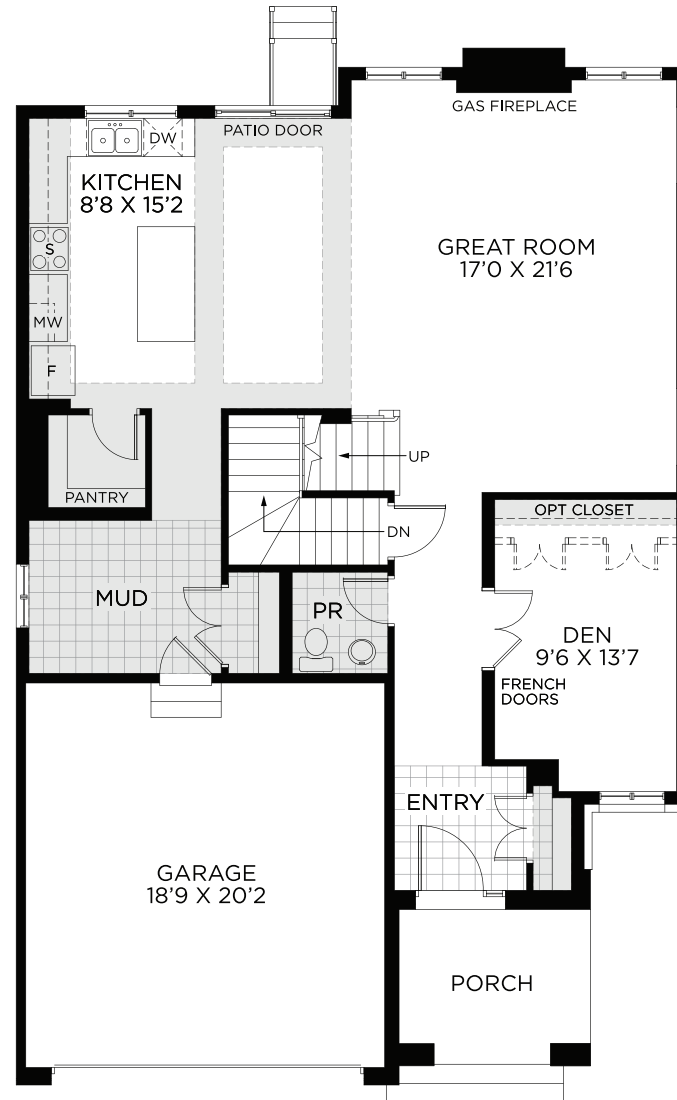
BASEMENT - FINISHED AREA 368 SQ.FT.



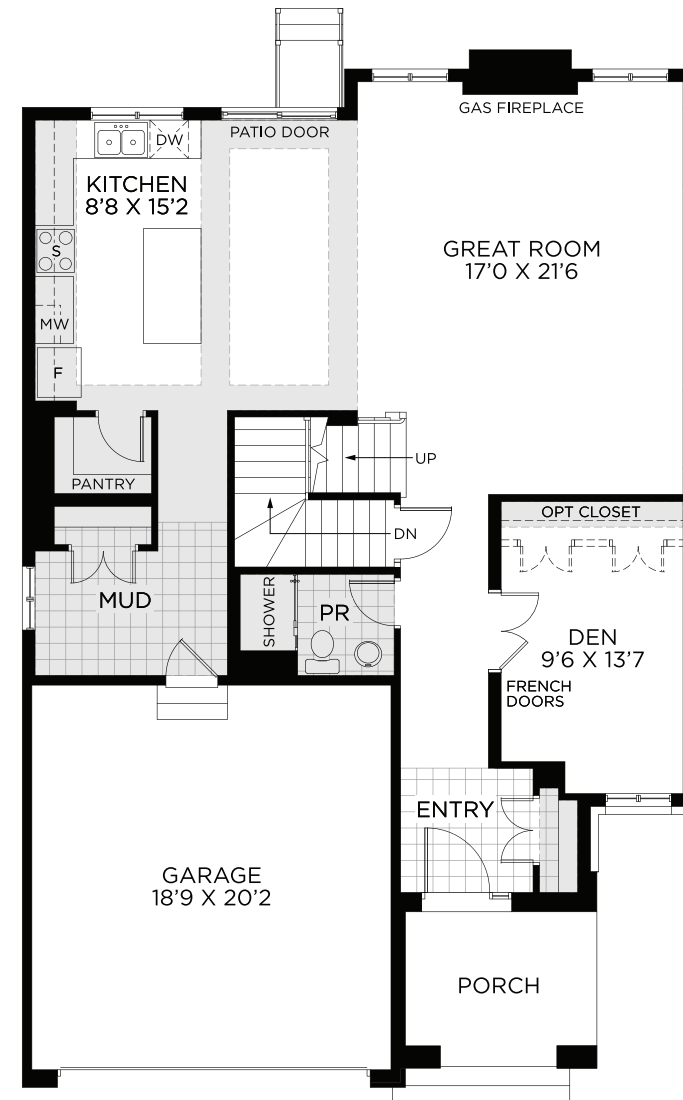
2,797 SQ.FT.

44' DESIGN

PACIFIC SERIES



GROUND FLOOR

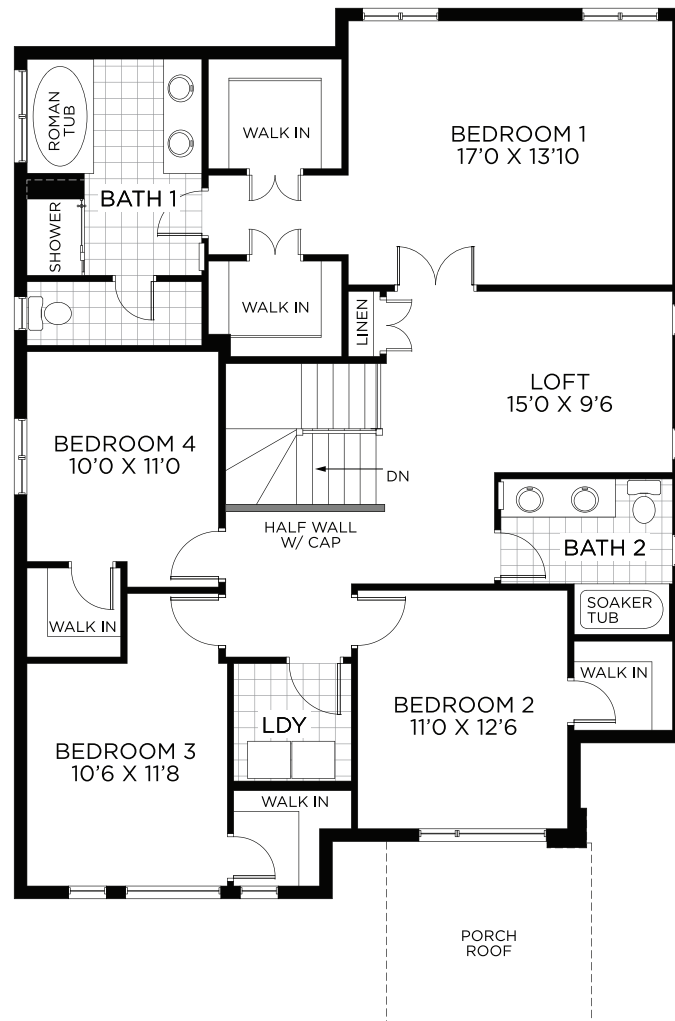


OPT. GROUND FLOOR W/3PC POWDER ROOM

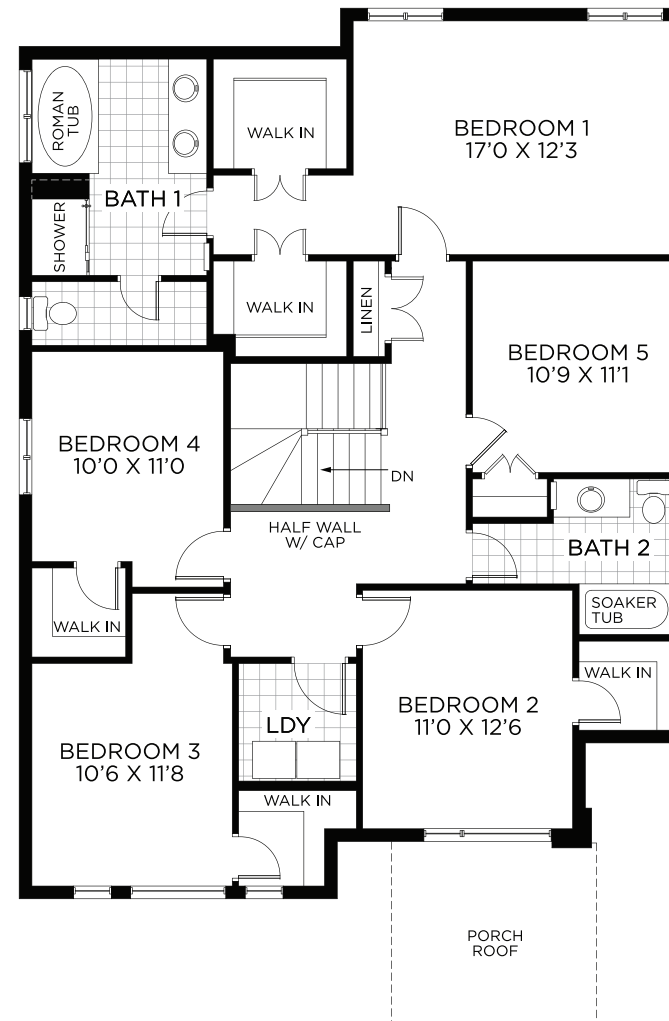
2,797 SQ.FT.

44'DESIGN

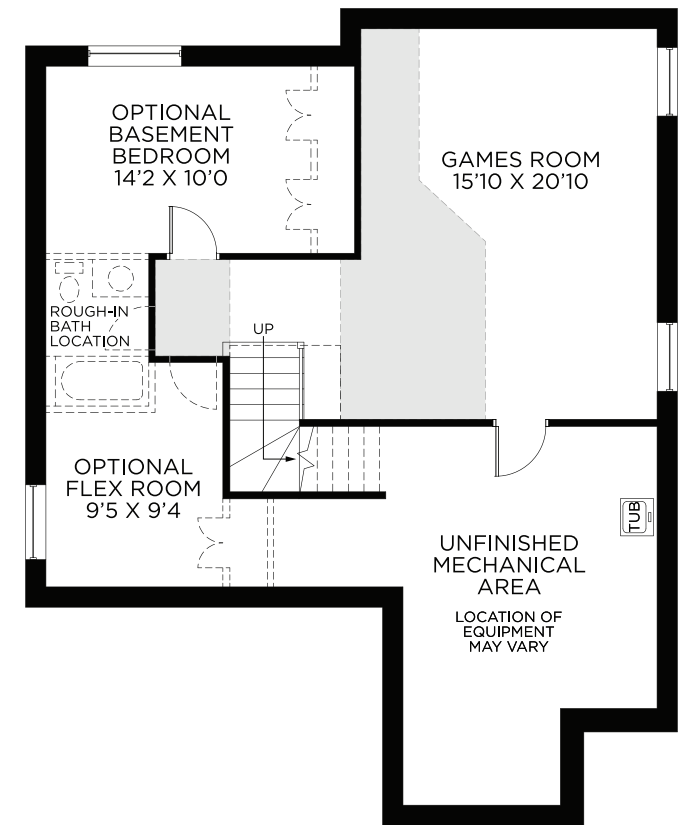
PACIFIC SERIES



BEDROOM FLOOR



OPT. BEDROOM FLOOR W/5 BEDROOMS



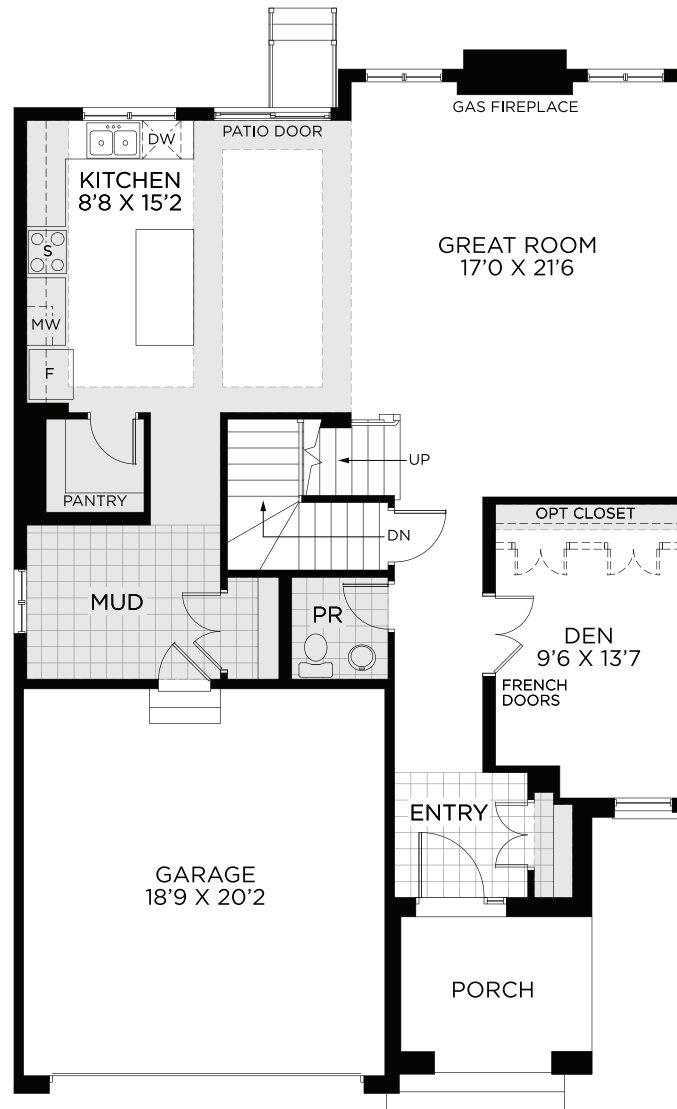
BASEMENT - FINISHED AREA 465 SQ.FT.



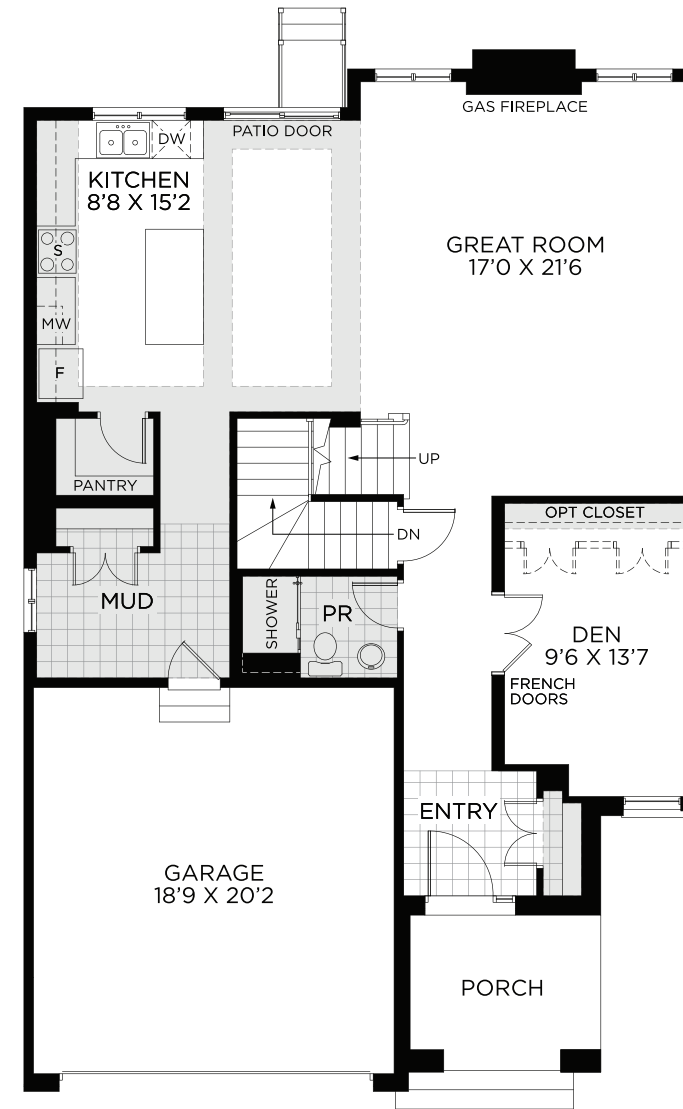
2,806 SQ.FT.

44' DESIGN

HORIZON SERIES



GROUND FLOOR

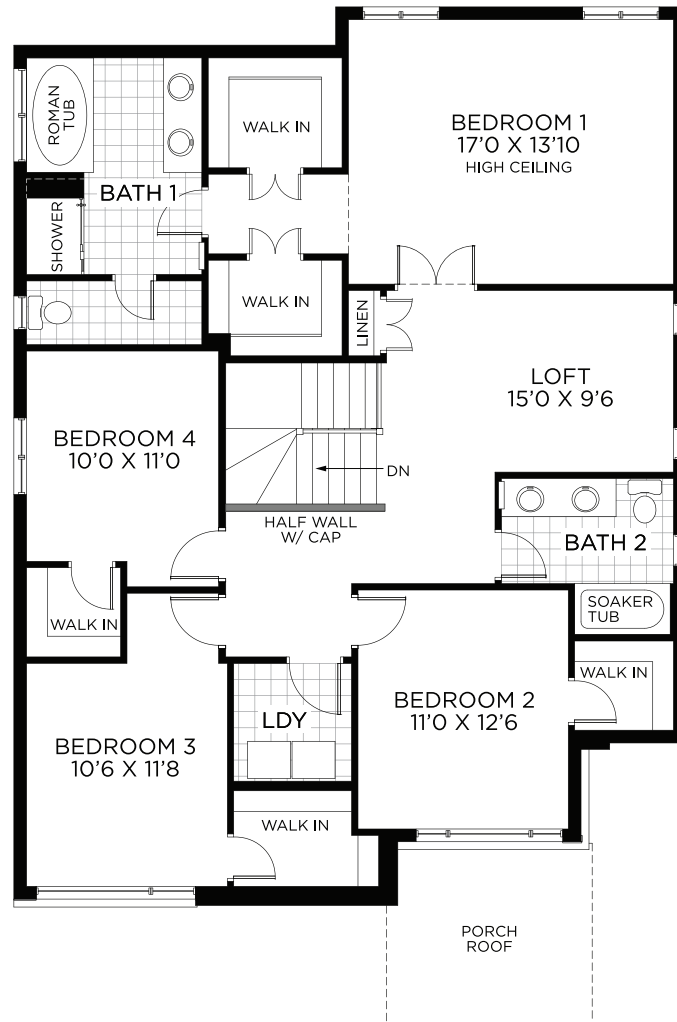


OPT. GROUND FLOOR W/3PC POWDER ROOM

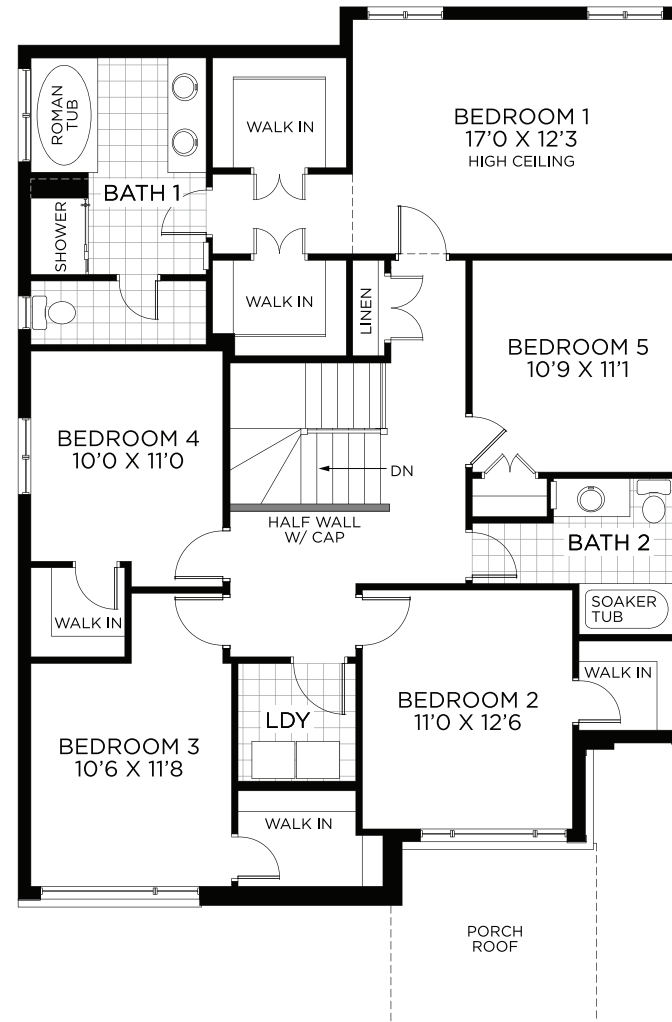
2,806 SQ.FT.

44'DESIGN

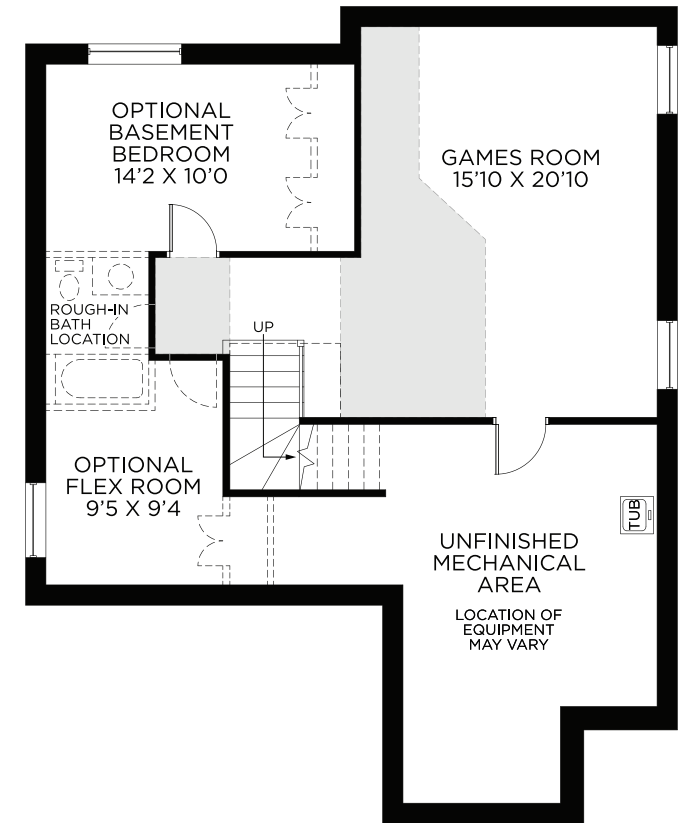
HORIZON SERIES



BEDROOM FLOOR



OPT. BEDROOM FLOOR W/5 BEDROOMS



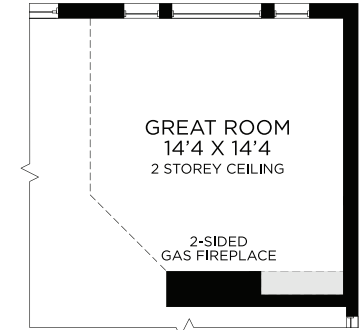
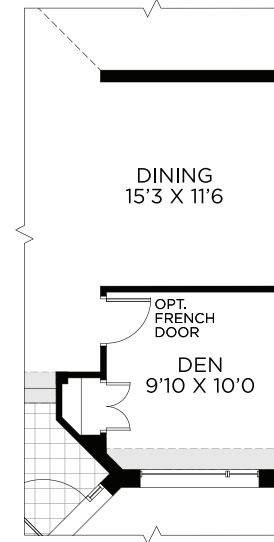
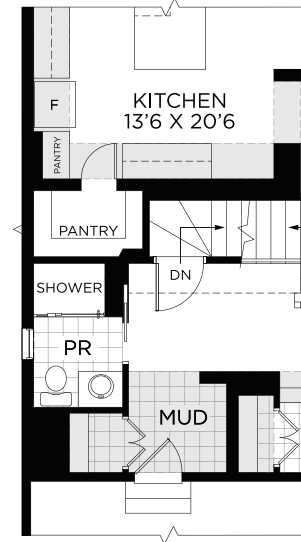
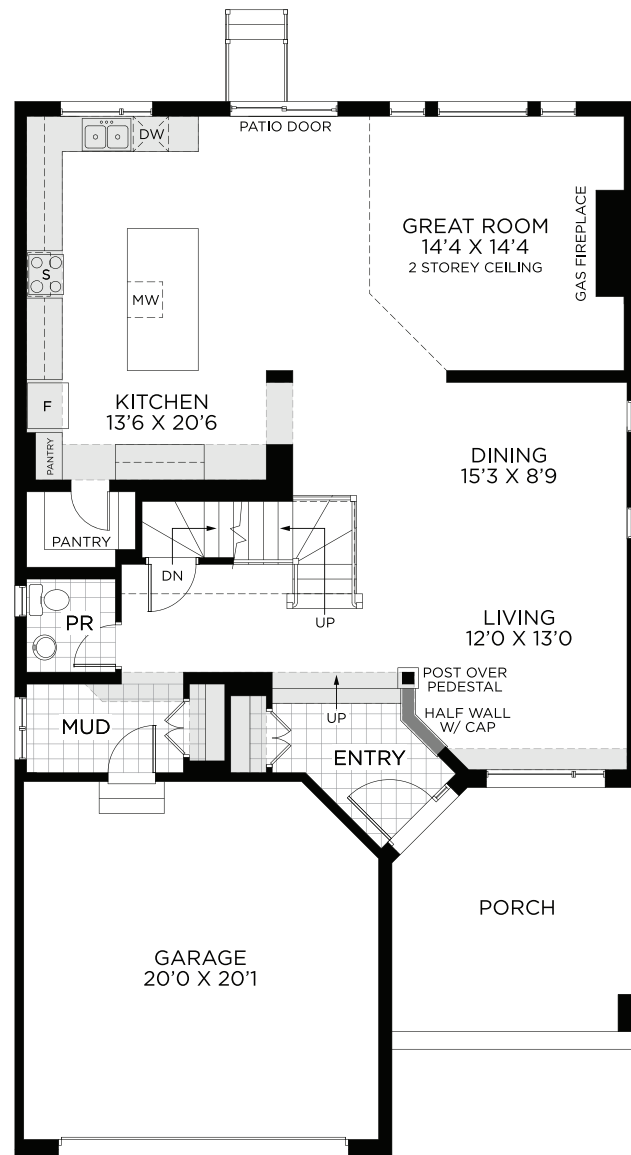
BASEMENT - FINISHED AREA 465 SQ.FT.



2,819 SQ.FT.

44' DESIGN

PACIFIC SERIES

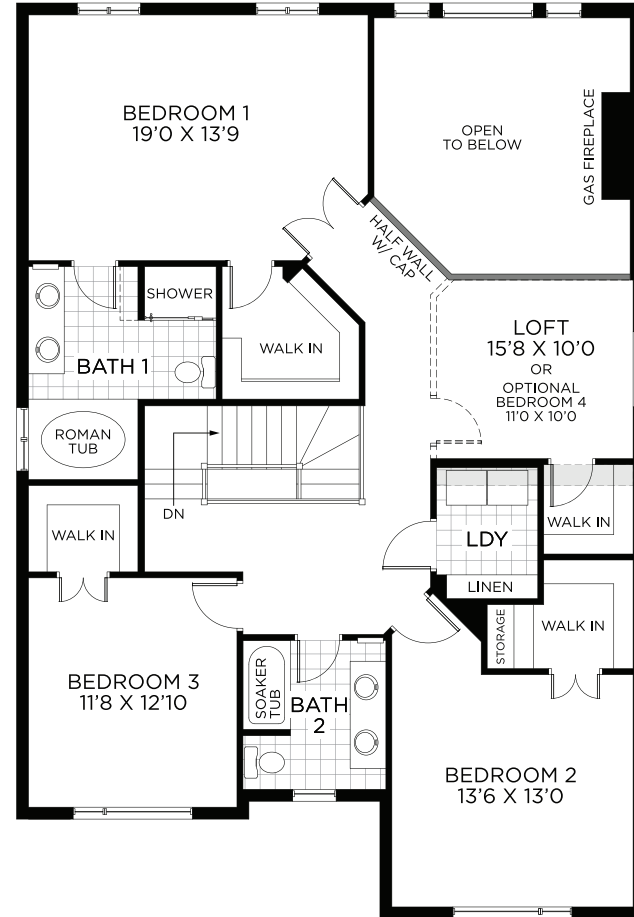


HILLSBORO

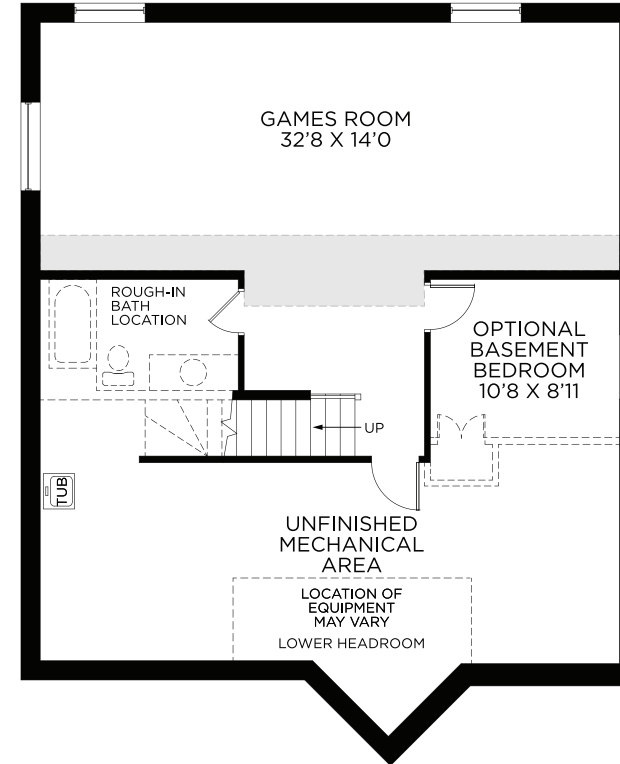
2,819 SQ.FT.

44' DESIGN

PACIFIC SERIES



BEDROOM FLOOR



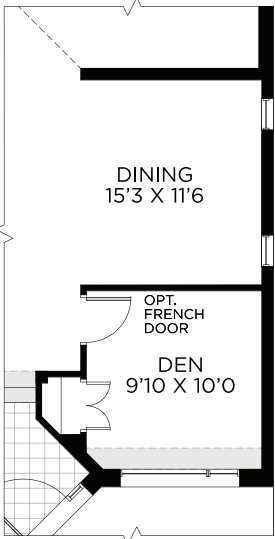
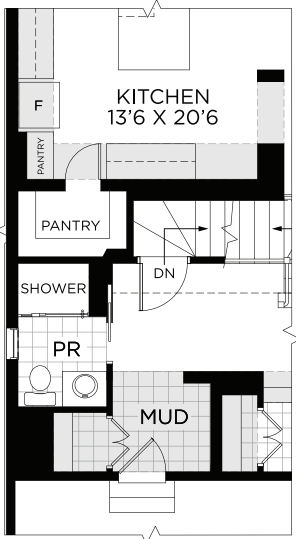
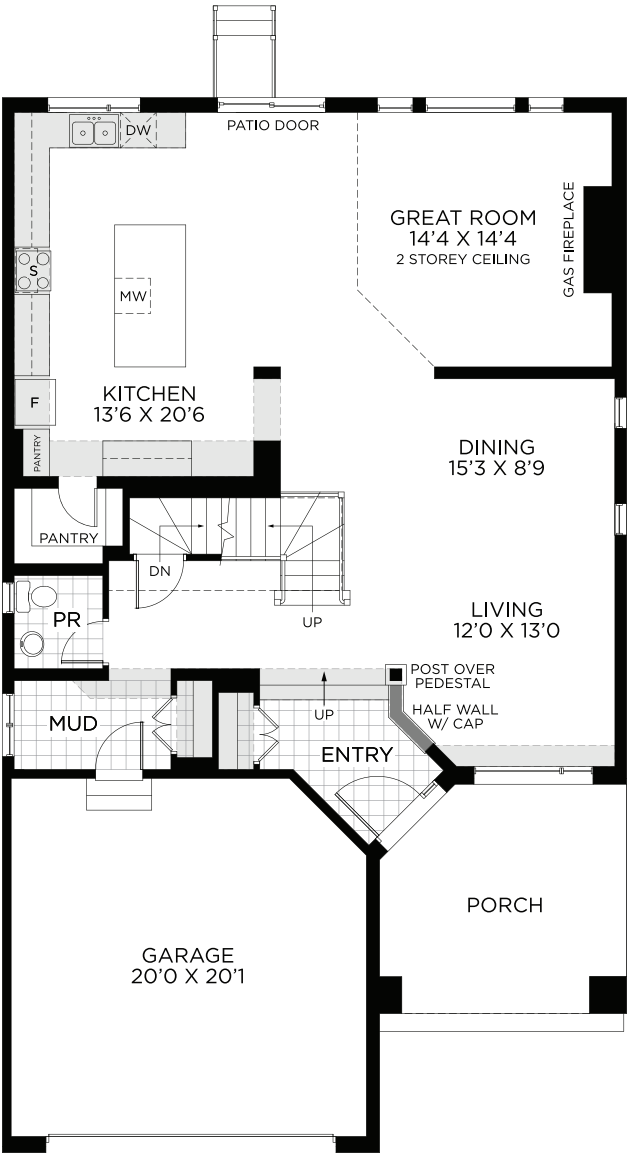
BASEMENT - FINISHED AREA 602 SQ.FT.

All illustrations are artist concepts and should be used as reference only. Plans and specifications are subject to change without notice. All dimensions are approximate. Actual usable floor space may vary from stated area. Structural/mechanical requirements may result in bulkheads, dimensional revisions and/or minor adjustments that follow Tarion regulations. Exterior steps and landings, including garage, may vary with site grading. Brick sides and rears are subject to site specifications. R-2000 is an official mark of Natural Resources Canada. Used with permission. E. & O. E. 02/02/21

R-2000*



LINEN



GROUND FLOOR

OPT. GROUND FLOOR
W/3 PC POWDER ROOM

OPT. GROUND FLOOR
W/DEN

OPT. GROUND FLOOR
W/ RELOCATED FIREPLACE

2,819 SQ.FT.

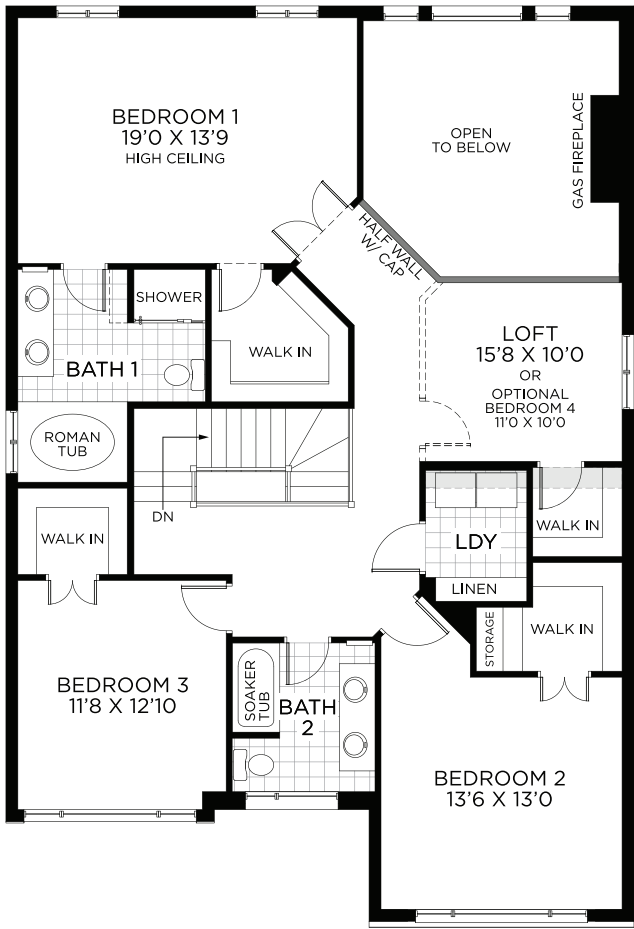
44'DESIGN

HORIZON SERIES

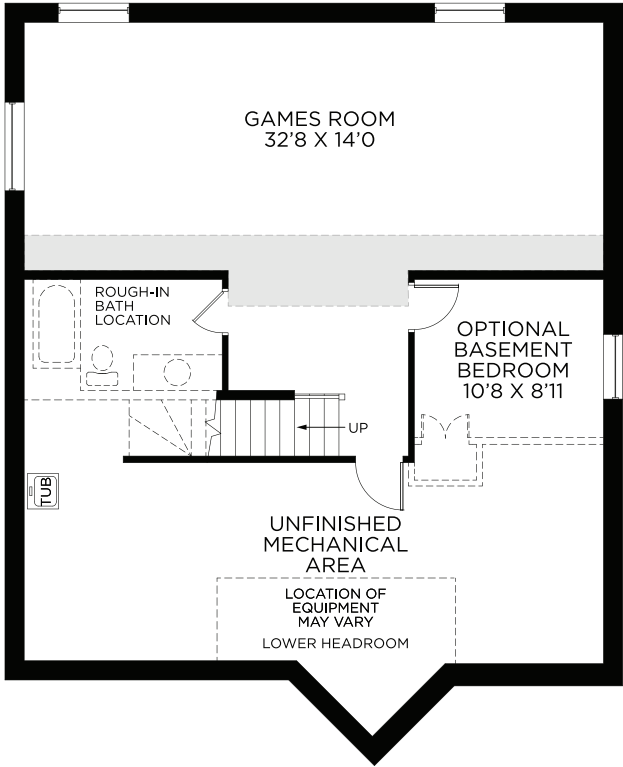
2,819 SQ.FT.

44' DESIGN

HORIZON SERIES



BEDROOM FLOOR



BASEMENT - FINISHED AREA 602 SQ.FT.

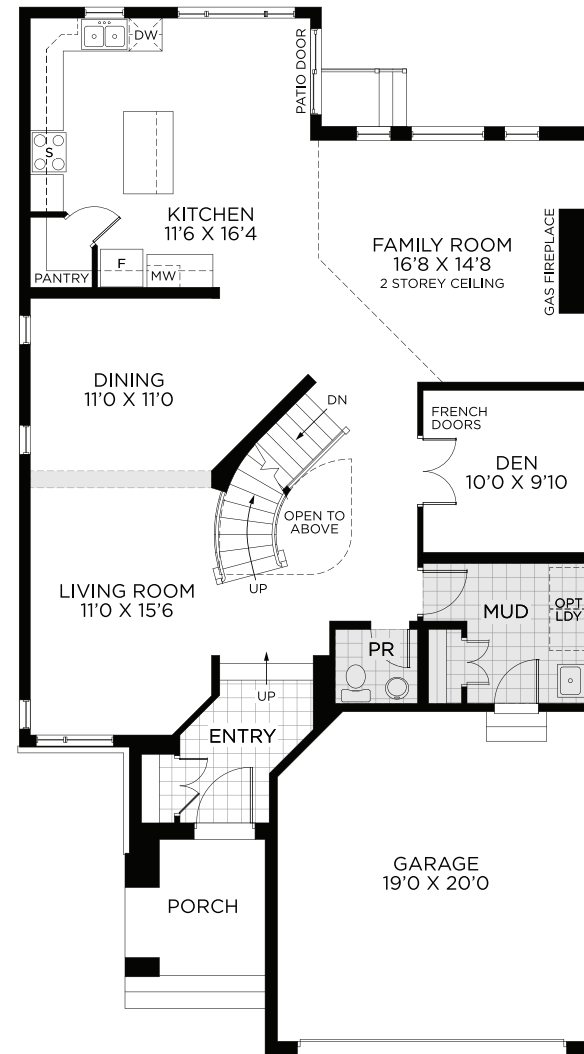
All illustrations are artist concepts and should be used as reference only. Plans and specifications are subject to change without notice. All dimensions are approximate. Actual usable floor space may vary from stated area. Structural/mechanical requirements may result in bulkheads, dimensional revisions and/or minor adjustments that follow Taron regulations. Exterior steps and landings, including garage, may vary with site grading. Brick sides and rears are subject to site specifications. R-2000 is an official mark of Natural Resources Canada. Used with permission. E. & O. E. 02/02/21



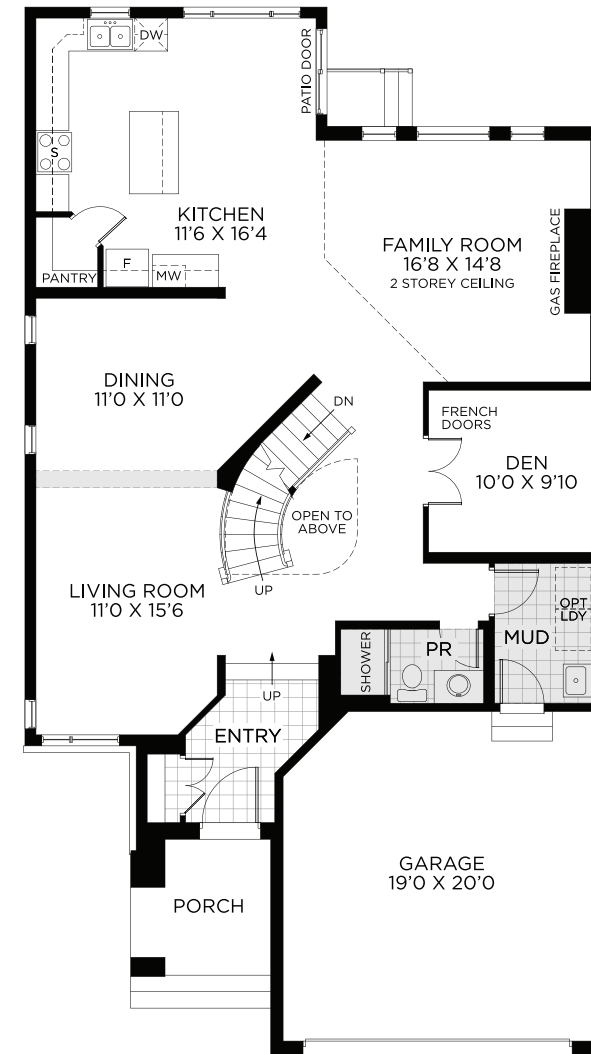
2,914 SQ.FT.

44' DESIGN

PACIFIC SERIES



GROUND FLOOR

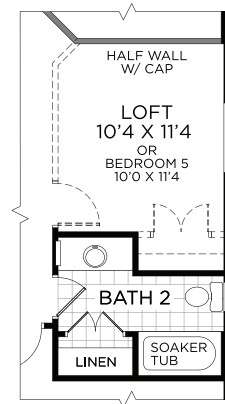
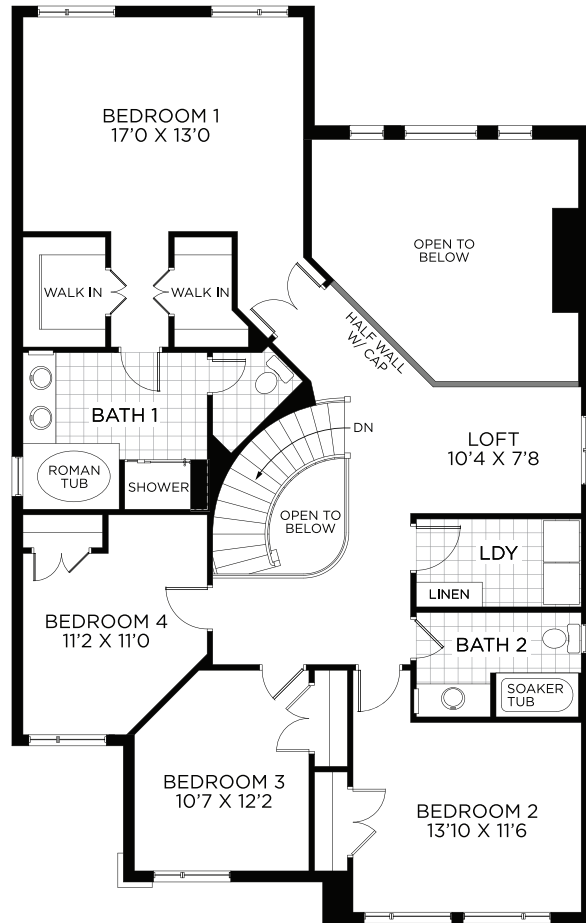


OPT. GROUND FLOOR W/3PC POWDER ROOM

2,914 SQ.FT.

44' DESIGN

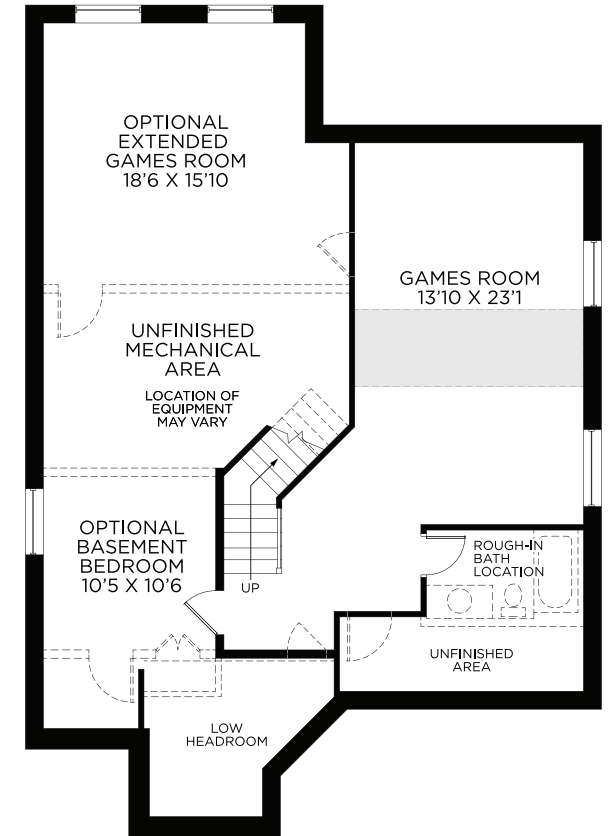
PACIFIC SERIES



OPT. BEDROOM FLOOR W/O UPSTAIRS LAUNDRY



OPT. BEDROOM FLOOR W/ 3 BEDROOMS & 3.5 BATHS OR 4 BEDROOMS & 3.5 BATHS



BASEMENT - FINISHED AREA 468 SQ.FT.

BEDROOM FLOOR

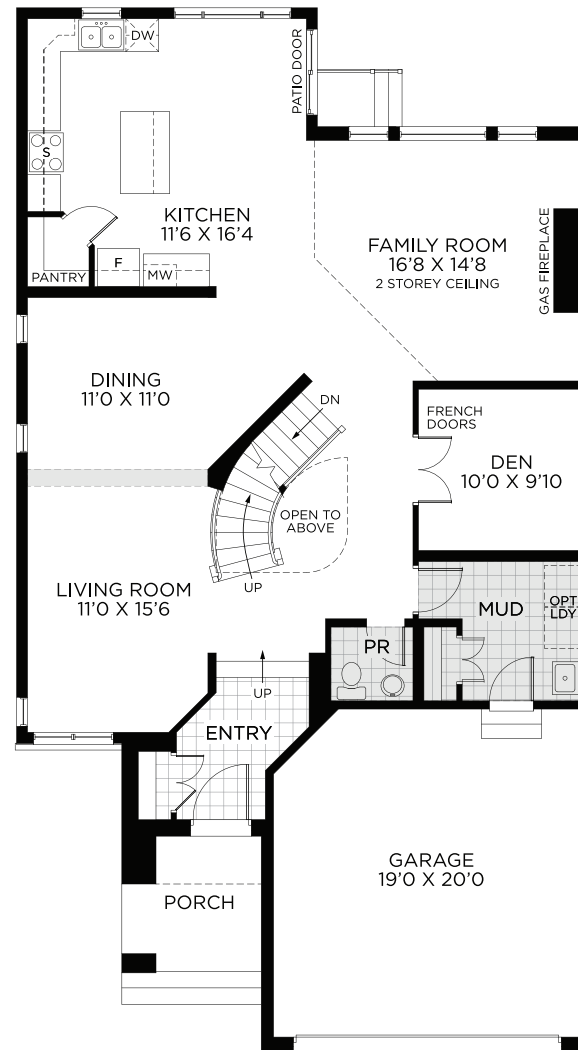


PORTLAND

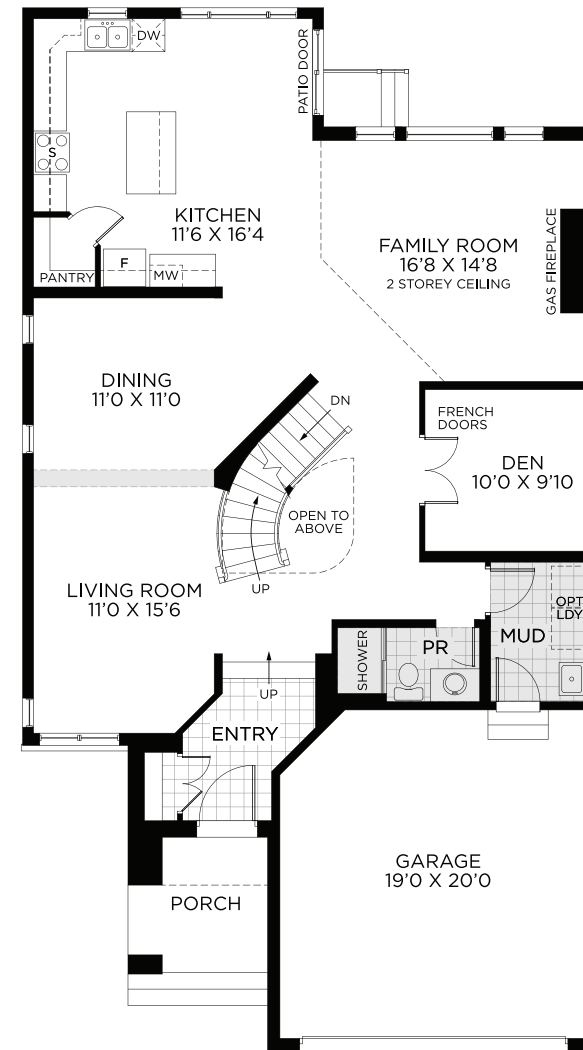
2,945 SQ.FT.

44' DESIGN

HORIZON SERIES



GROUND FLOOR



OPT. GROUND FLOOR W/3PC POWDER ROOM

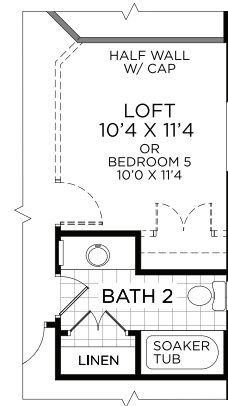
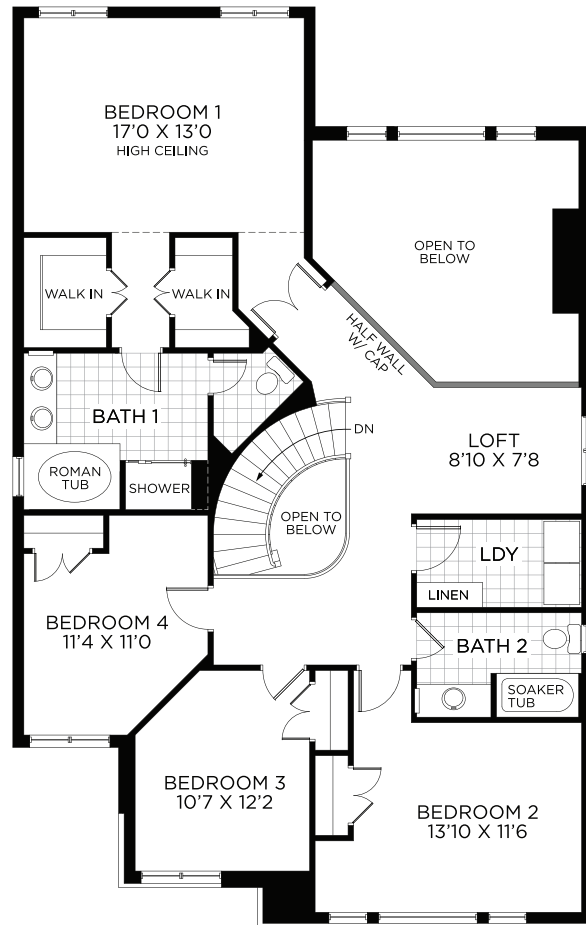
All illustrations are artist concepts and should be used as reference only. Plans and specifications are subject to change without notice. All dimensions are approximate. Actual usable floor space may vary from stated area. Structural/mechanical requirements may result in bulkheads, dimensional revisions and/or minor adjustments that follow Taron regulations. Exterior steps and landings, including garage, may vary with site grading. Brick sides and rears are subject to site specifications. R-2000 is an official mark of Natural Resources Canada. Used with permission. E. & O. E. 02/02/21

R-2000*

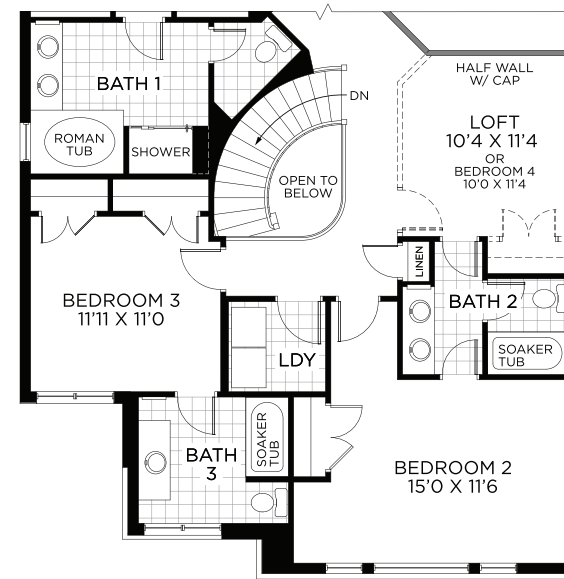
2,945 SQ.FT.

44' DESIGN

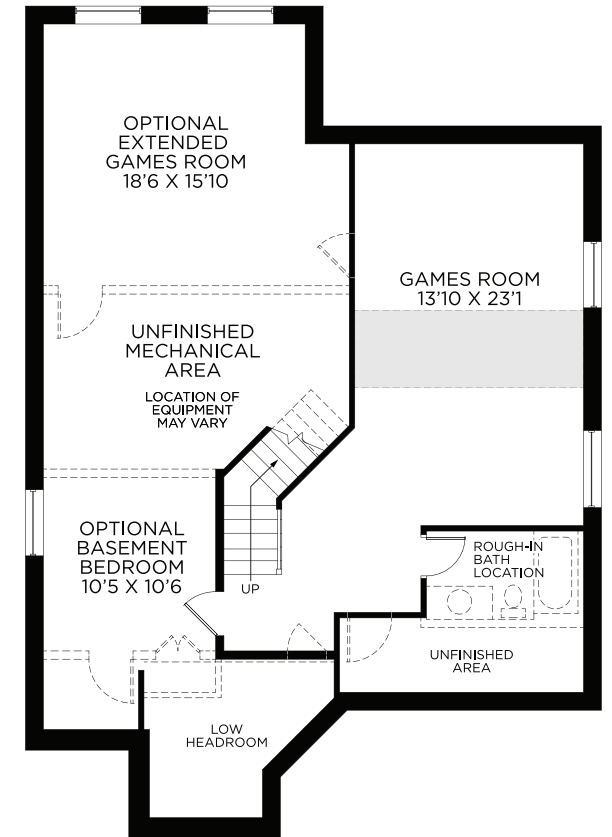
HORIZON SERIES



OPT. BEDROOM FLOOR W/O UPSTAIRS LAUNDRY



OPT. BEDROOM FLOOR W/ 3 BEDROOMS & 3.5 BATHS OR 4 BEDROOMS & 3.5 BATHS



BASEMENT - FINISHED AREA 468 SQ.FT.

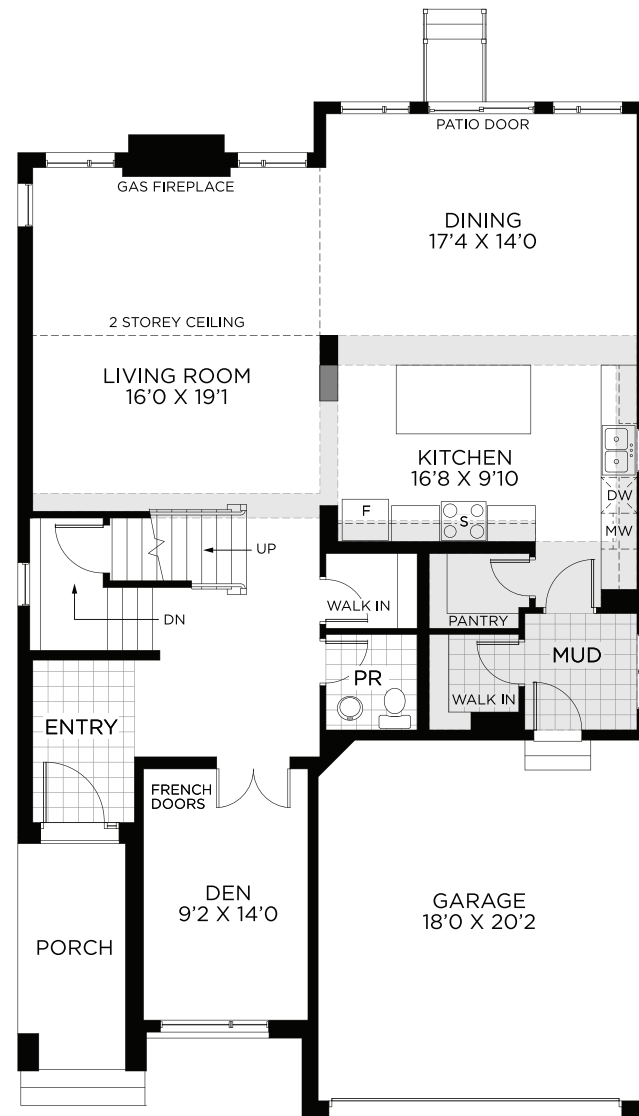
BEDROOM FLOOR



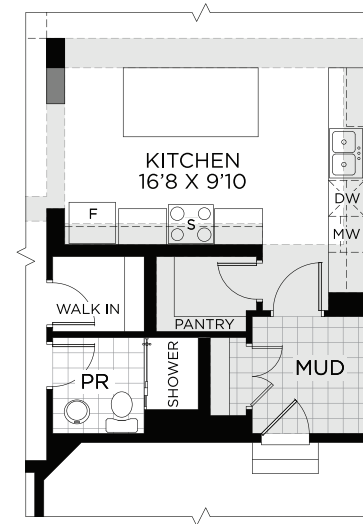
2,950 SQ.FT.

44' DESIGN

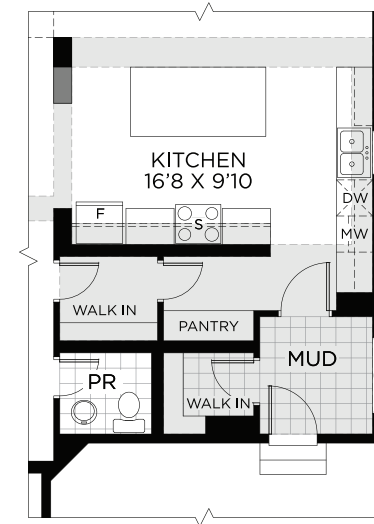
PACIFIC SERIES



GROUND FLOOR



OPT. GROUND FLOOR
W/3 PC POWDER ROOM

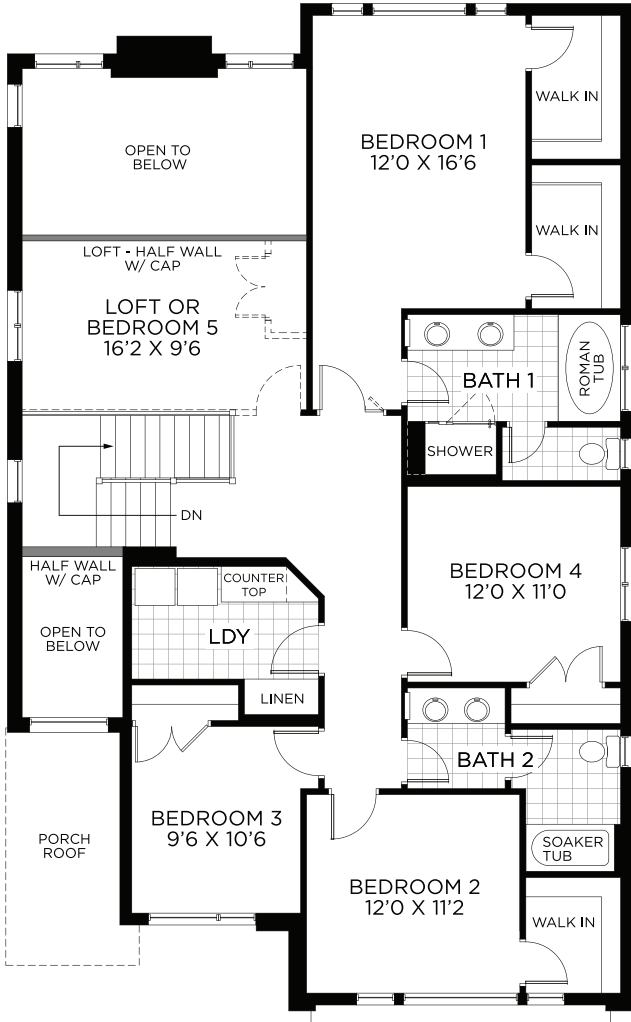


OPT. GROUND FLOOR
W/WALK-THRU ENTRY CLOSET

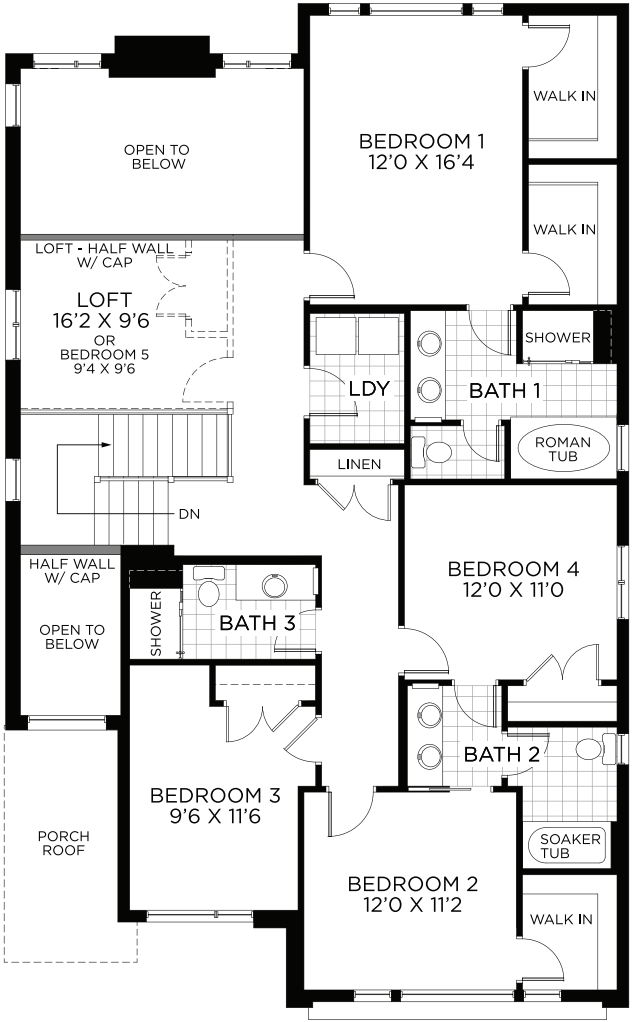
2,950 SQ.FT.

44'DESIGN

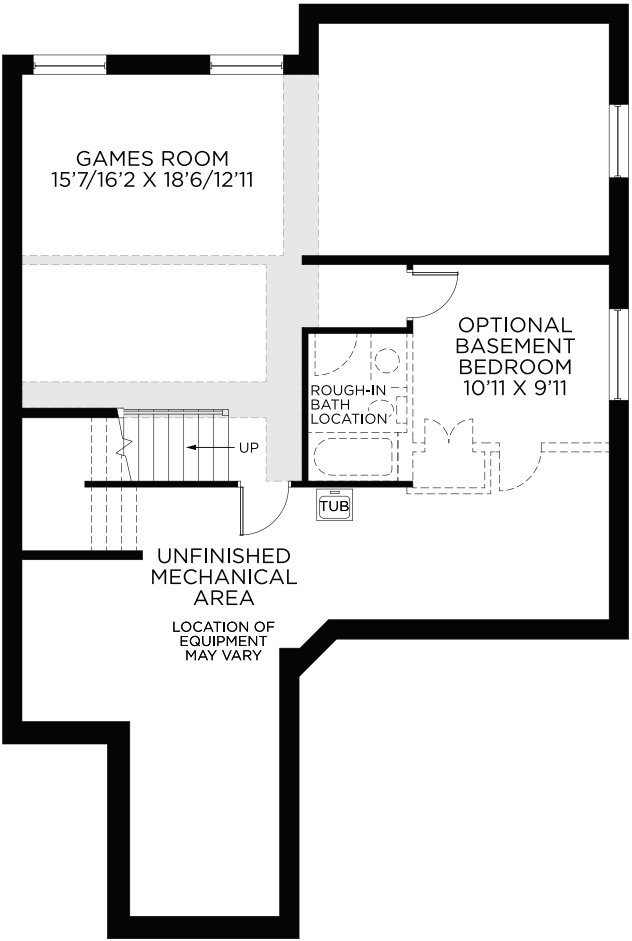
PACIFIC SERIES



BEDROOM FLOOR



OPT. BEDROOM FLOOR W/3.5 BATHS



BASEMENT - FINISHED AREA 595 SQ.FT.



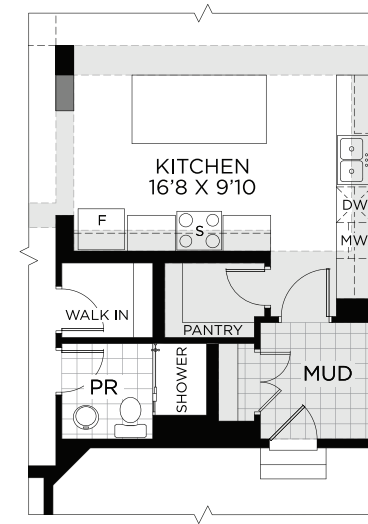
2,964 SQ.FT.

44' DESIGN

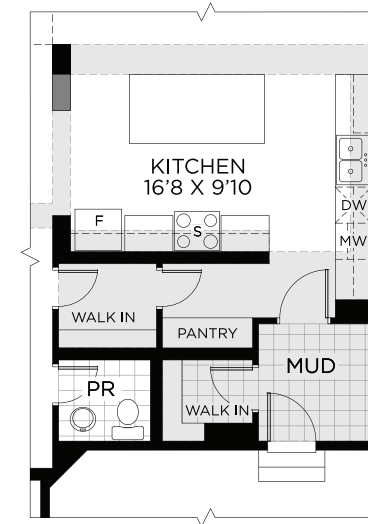
HORIZON SERIES



GROUND FLOOR



OPT. GROUND FLOOR
W/3 PC POWDER ROOM

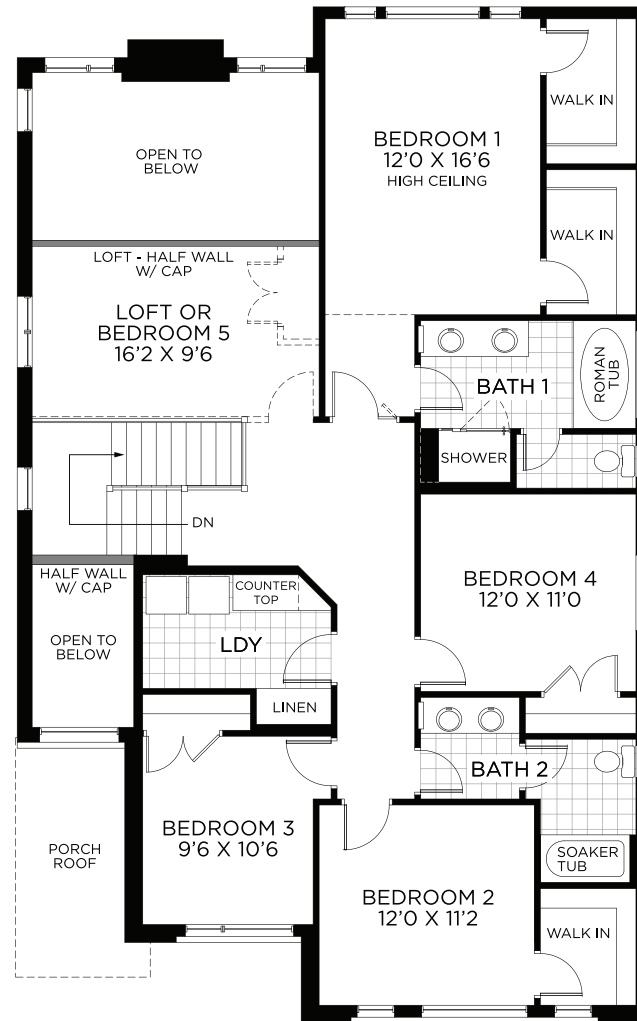


OPT. GROUND FLOOR
W/WALK-THRU ENTRY CLOSET

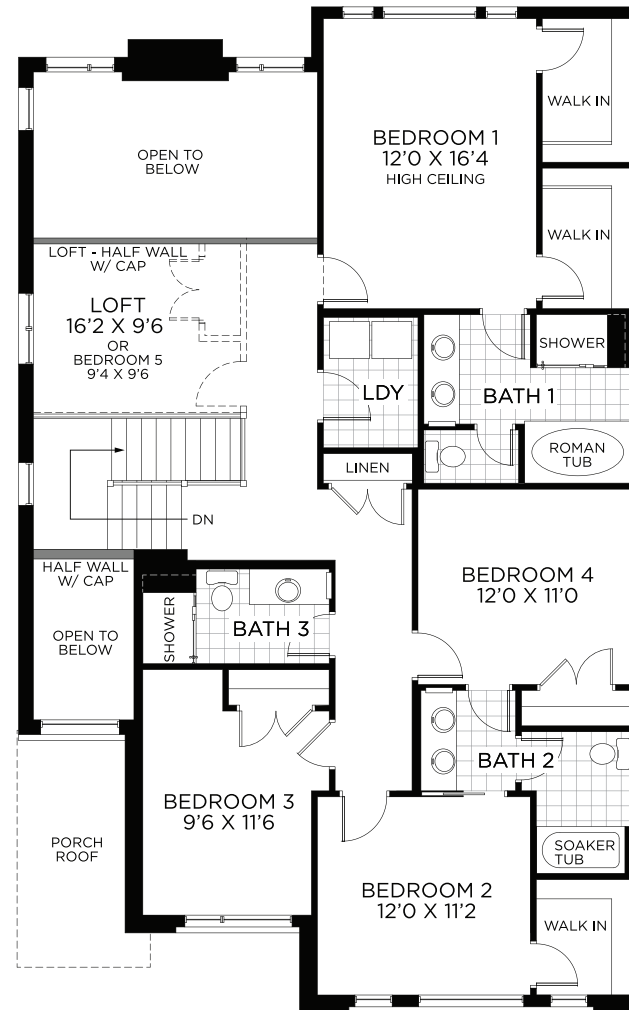
2,964 SQ.FT.

44' DESIGN

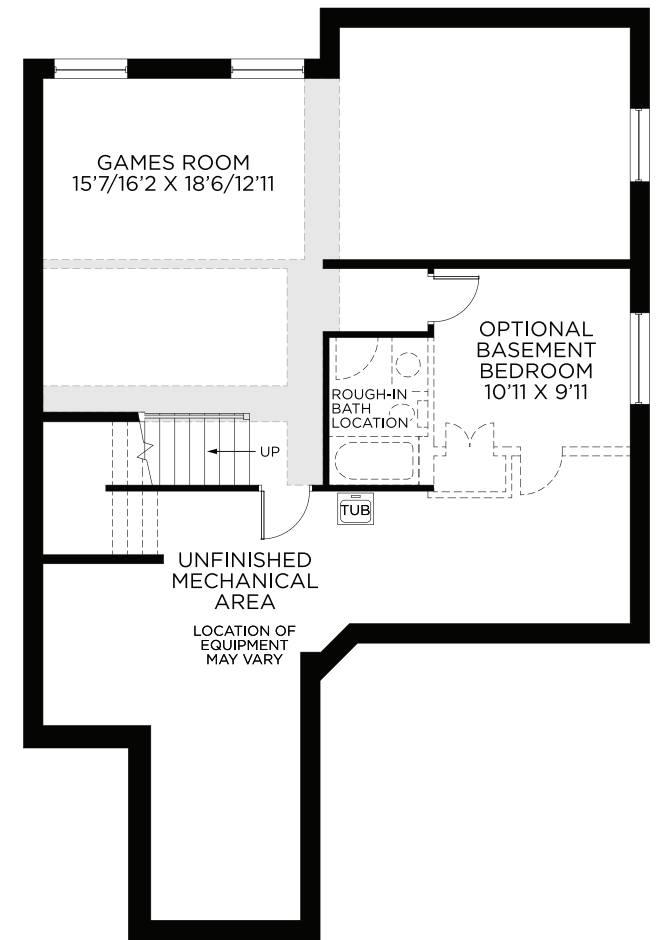
HORIZON SERIES



BEDROOM FLOOR



OPT. BEDROOM FLOOR W/3.5 BATHS



BASEMENT - FINISHED AREA 595 SQ.FT.