



**SANTA MARIA**  
2,077 sq.ft.

Phase 115-2 Block 7 Lot 32  
700 Horned Owl Ave

*Riverside*  
South

**\$739,900**

**JANUARY 11, 2022**

### COLOURS & FINISHES TO BE SELECTED

This double car garage end unit ENERGY STAR® Certified townhome features the standard 3 bedroom with 4PC ensuite layout.

### Urbandale's Standard Features

- Quartz Countertops in Kitchen, Ensuite & Main Bath • 39" Upper Kitchen Cabinetry
  - Soft close hinges and drawers in Kitchen & Bathrooms (locations specified by builder)
- Central Air Conditioning • Tiled Ensuite Shower Walls with Custom Glass Door

### Urbandale's Smart Home Features

**Control everything from your phone with no subscriptions.  
Discover Urbandale's smart home features as standard!**

- Video Doorbell • Programmable WiFi Thermostat • Four Smart Switches (locations specified by builder)
- WiFi Garage Door Opener • Convenient USB outlet in Kitchen & Master Bedroom (locations specified by builder)



All illustrations are artist concepts. Homes may be left of right versions. All dimensions are approximate. Actual usable floor space may vary from stated area. Structural/mechanical requirements may result in dimensional revisions and/or adjustments to layout. Plans and specifications are subject to change without notice. Exterior elevations are determined by Urbandale and may vary. ENERGY STAR® is an official mark of Natural Resources Canada. Used with permission. E. & O. E. 19/01/21

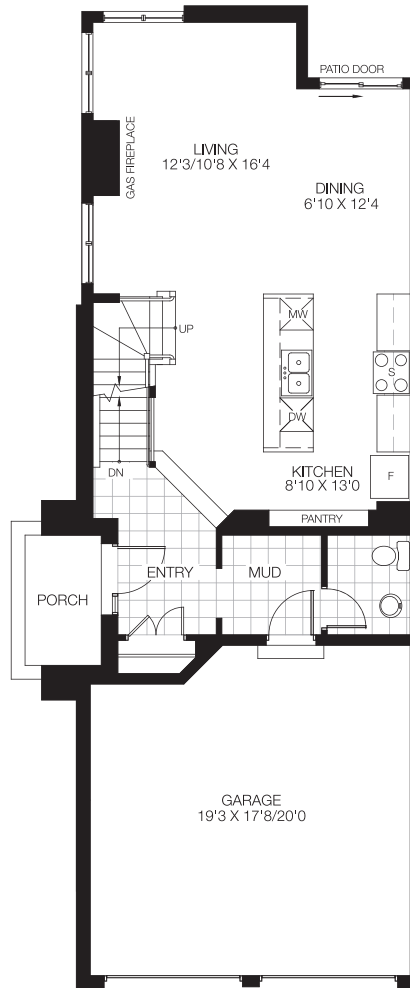


# SANTA MARIA

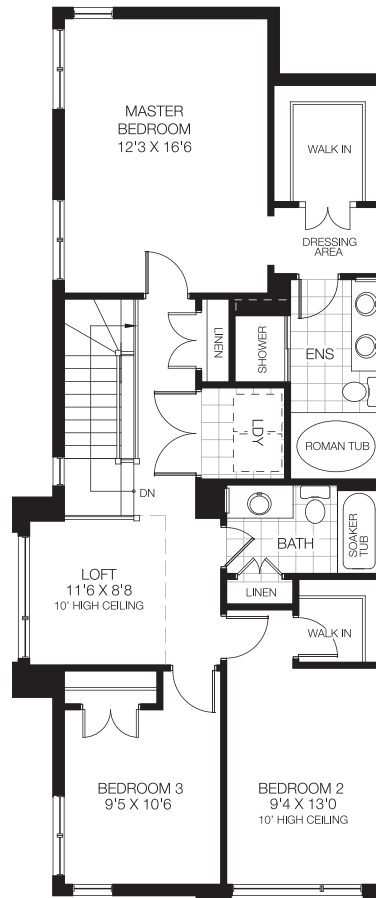
2,077 sq.ft.

Phase 115-2 Block 7 Lot 32  
700 Horned Owl Ave

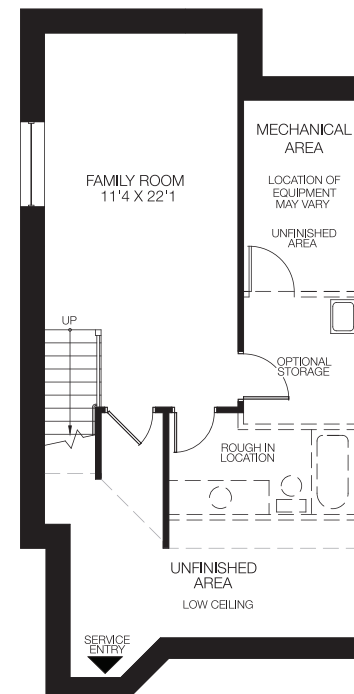
*Riverside*  
South



GROUND FLOOR



BEDROOM FLOOR  
3 BEDROOMS W/4PC ENSUITE



BASEMENT  
FINISHED AREA 274 SQ.FT.



All illustrations are artist concepts. Homes may be left or right versions. All dimensions are approximate. Actual usable floor space may vary from stated area. Structural/mechanical requirements may result in dimensional revisions and/or adjustments to layout including bulkheads. Brick sides and rears are subject to site specifications, please see Sales Consultant for details. Plans and specifications are subject to change without notice. Exterior elevations are determined by Urbandale and may vary. The ENERGY STAR® for New Homes Standard is administered and promoted in Canada by Natural Resources Canada. E. & O. E. 19/01/21





## ATLANTIS

2,324 sq.ft.

Phase 115-2 Block 7 Lot 33  
702 Horned Owl Ave

*Riverside*  
South

**\$678,900**

**JANUARY 13, 2022**

### COLOURS & FINISHES TO BE SELECTED

This interior unit ENERGY STAR® Certified townhome features the standard  
3 bedroom with loft layout

### Urbandale's Standard Features

- Quartz Countertops in Kitchen, Ensuite & Main Bath • 39" Upper Kitchen Cabinetry
  - Soft close hinges and drawers in Kitchen & Bathrooms (locations specified by builder)
- Central Air Conditioning • Tiled Ensuite Shower Walls with Custom Glass Door

### Urbandale's Smart Home Features

**Control everything from your phone with no subscriptions.  
Discover Urbandale's smart home features as standard!**

- Video Doorbell • Programmable WiFi Thermostat • Four Smart Switches (locations specified by builder)
- WiFi Garage Door Opener • Convenient USB outlet in Kitchen & Master Bedroom (locations specified by builder)



All illustrations are artist concepts. Homes may be left of right versions. All dimensions are approximate. Actual usable floor space may vary from stated area. Structural/mechanical requirements may result in dimensional revisions and/or adjustments to layout. Plans and specifications are subject to change without notice. Exterior elevations are determined by Urbandale and may vary. ENERGY STAR® is an official mark of Natural Resources Canada. Used with permission. E. & O. E. 19/01/21

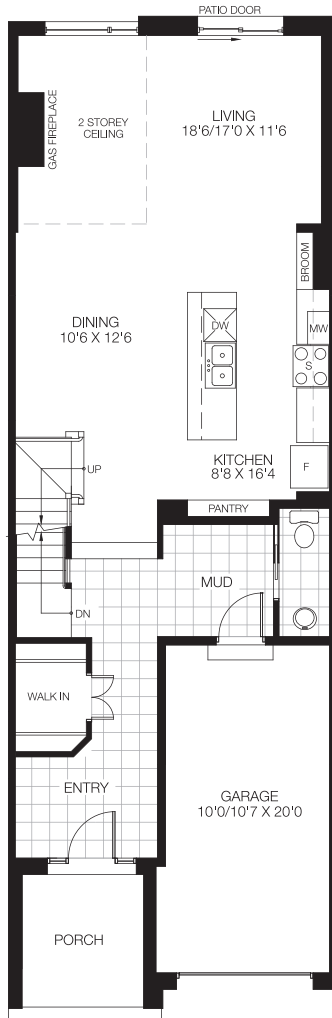


# ATLANTIS

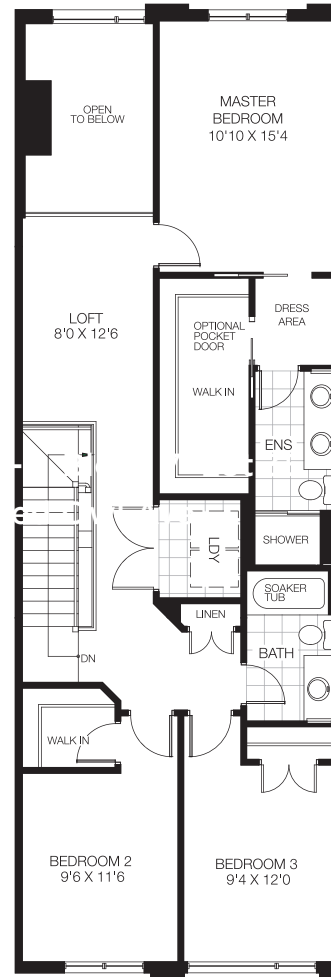
2,324 sq.ft.

Phase 115-2 Block 7 Lot 33  
702 Horned Owl Ave

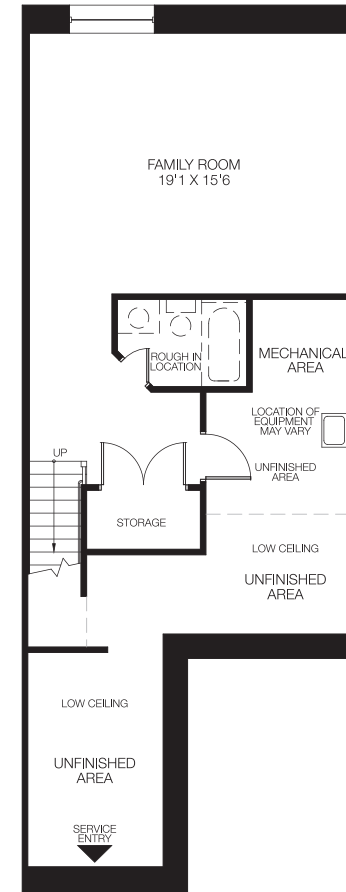
*Riverside*  
South



GROUND FLOOR



BEDROOM FLOOR  
3 BEDROOMS W/LOFT



BASEMENT  
FINISHED AREA 418 SQ.FT.



All illustrations are artist concepts. Homes may be left or right versions. All dimensions are approximate. Actual usable floor space may vary from stated area. Structural/mechanical requirements may result in dimensional revisions and/or adjustments to layout including bulkheads. Brick sides and rears are subject to site specifications, please see Sales Consultant for details. Plans and specifications are subject to change without notice. Exterior elevations are determined by Urbandale and may vary. The ENERGY STAR® for New Homes Standard is administered and promoted in Canada by Natural Resources Canada. E. & O. E. 19/01/21







## ENDEAVOUR

2,088 sq.ft.

Phase 115-2 Block 7 Lot 34  
704 Horned Owl Ave

*Riverside*  
South

**\$664,900**

JANUARY 18, 2022

### COLOURS & FINISHES TO BE SELECTED

This interior unit ENERGY STAR® Certified townhome features the standard 3 bedroom with loft layout.

### Urbandale's Standard Features

- Quartz Countertops in Kitchen, Ensuite & Main Bath • 39" Upper Kitchen Cabinetry
  - Soft close hinges and drawers in Kitchen & Bathrooms (locations specified by builder)
- Central Air Conditioning • Tiled Ensuite Shower Walls with Custom Glass Door

### Urbandale's Smart Home Features

Control everything from your phone with no subscriptions.  
Discover Urbandale's smart home features as standard!

- Video Doorbell • Programmable WiFi Thermostat • Four Smart Switches (locations specified by builder)
- WiFi Garage Door Opener • Convenient USB outlet in Kitchen & Master Bedroom (locations specified by builder)



All illustrations are artist concepts. Homes may be left of right versions. All dimensions are approximate. Actual usable floor space may vary from stated area. Structural/mechanical requirements may result in dimensional revisions and/or adjustments to layout. Plans and specifications are subject to change without notice. Exterior elevations are determined by Urbandale and may vary. ENERGY STAR® is an official mark of Natural Resources Canada. Used with permission. E. & O. E. 19/01/21

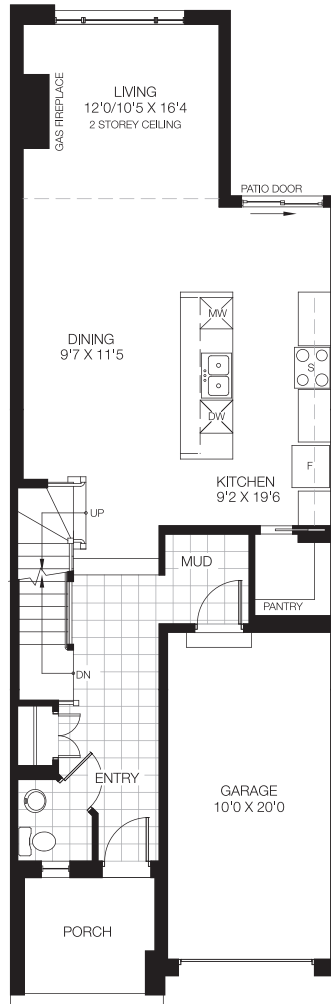


# ENDEAVOUR

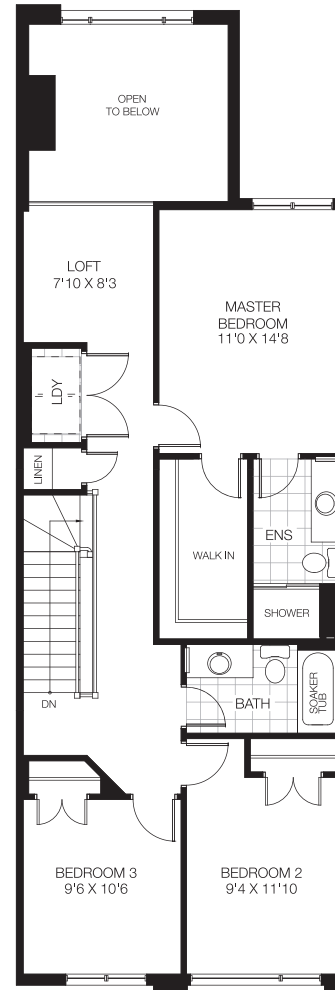
2,088 sq.ft.

Phase 115-2 Block 7 Lot 34  
704 Horned Owl Ave

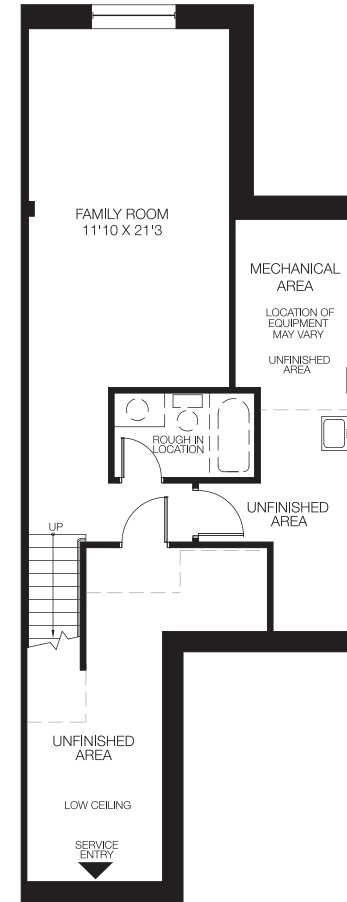
*Riverside*  
South



GROUND FLOOR



BEDROOM FLOOR  
3 BEDROOMS W/LOFT



BASEMENT  
FINISHED AREA 351 SQ.FT.



All illustrations are artist concepts. Homes may be left or right versions. All dimensions are approximate. Actual usable floor space may vary from stated area. Structural/mechanical requirements may result in dimensional revisions and/or adjustments to layout including bulkheads. Brick sides and rears are subject to site specifications, please see Sales Consultant for details. Plans and specifications are subject to change without notice. Exterior elevations are determined by Urbandale and may vary. The ENERGY STAR® for New Homes Standard is administered and promoted in Canada by Natural Resources Canada. E. & O. E. 19/01/21





**CALYPSO**  
1,770 sq.ft.

Phase 115-2 Block 7 Lot 35  
706 Horned Owl Ave

*Riverside*  
South

**\$636,900**

**JANUARY 20, 2022**

### COLOURS & FINISHES TO BE SELECTED

This interior unit ENERGY STAR® Certified townhome features the standard  
3 bedroom with 4PC ensuite layout

### Urbandale's Standard Features

- Quartz Countertops in Kitchen, Ensuite & Main Bath • 39" Upper Kitchen Cabinetry
  - Soft close hinges and drawers in Kitchen & Bathrooms (locations specified by builder)
- Central Air Conditioning • Tiled Ensuite Shower Walls with Custom Glass Door

### Urbandale's Smart Home Features

**Control everything from your phone with no subscriptions.  
Discover Urbandale's smart home features as standard!**

- Video Doorbell • Programmable WiFi Thermostat • Four Smart Switches (locations specified by builder)
- WiFi Garage Door Opener • Convenient USB outlet in Kitchen & Master Bedroom (locations specified by builder)



All illustrations are artist concepts. Homes may be left of right versions. All dimensions are approximate. Actual usable floor space may vary from stated area. Structural/mechanical requirements may result in dimensional revisions and/or adjustments to layout. Plans and specifications are subject to change without notice. Exterior elevations are determined by Urbandale and may vary. ENERGY STAR® is an official mark of Natural Resources Canada. Used with permission. E. & O. E. 19/01/21

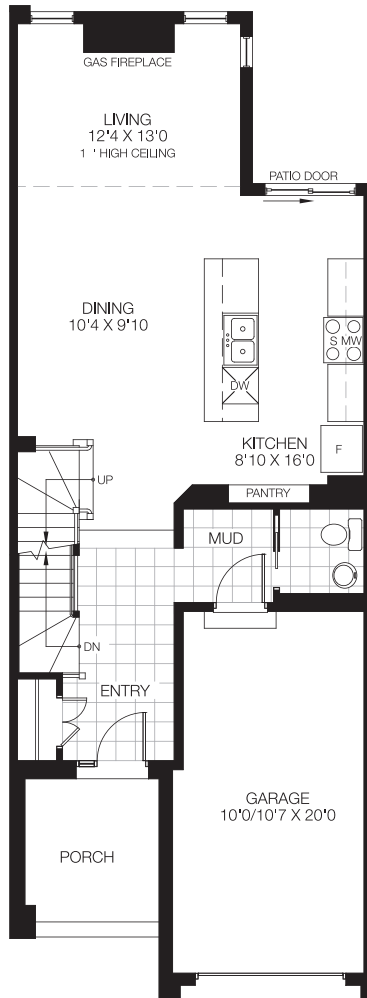


# CALYPSO

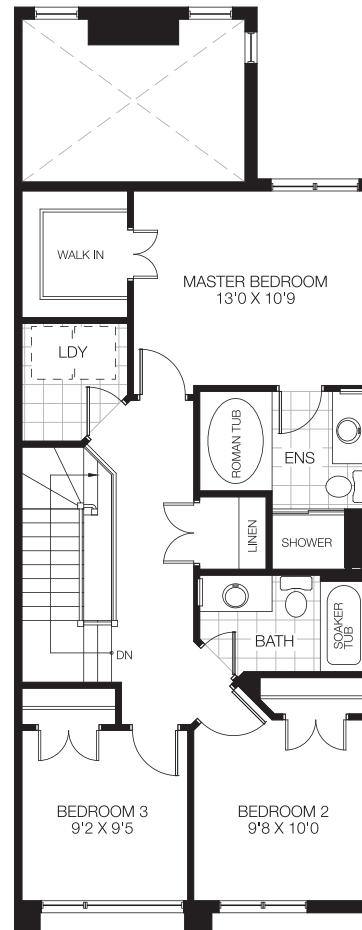
1,770 sq.ft.

Phase 115-2 Block 7 Lot 35  
706 Horned Owl Ave

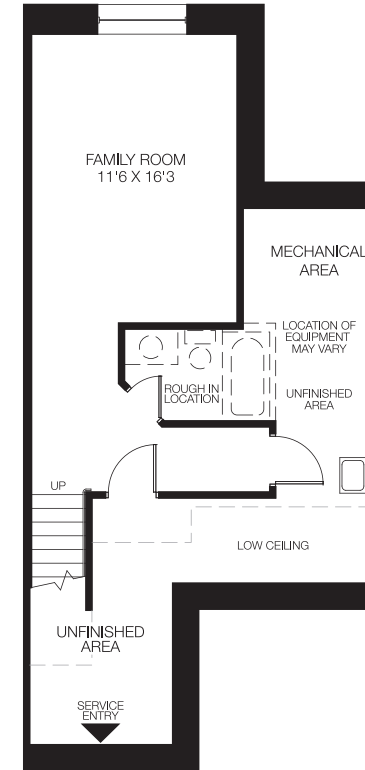
*Riverside*  
South



GROUND FLOOR



BEDROOM FLOOR  
3 BEDROOMS W/4PC ENSUITE



BASEMENT  
FINISHED AREA 320 SQ.FT.



All illustrations are artist concepts. Homes may be left or right versions. All dimensions are approximate. Actual usable floor space may vary from stated area. Structural/mechanical requirements may result in dimensional revisions and/or adjustments to layout including bulkheads. Brick sides and rears are subject to site specifications, please see Sales Consultant for details. Plans and specifications are subject to change without notice. Exterior elevations are determined by Urbandale and may vary. The ENERGY STAR® for New Homes Standard is administered and promoted in Canada by Natural Resources Canada. E. & O. E. 19/01/21







## ATLANTIS II

2,426 sq.ft.

Phase 115-2 Block 7 Lot 36  
708 Horned Owl Ave

*Riverside*  
South

**\$717,019**

JANUARY 25, 2022

### COLOURS & FINISHES TO BE SELECTED

This end unit ENERGY STAR® Certified townhome features the optional 4 bedroom with loft and luxury ensuite layout. Price includes private driveway premium.

### Urbandale's Standard Features

- Quartz Countertops in Kitchen, Ensuite & Main Bath • 39" Upper Kitchen Cabinetry
  - Soft close hinges and drawers in Kitchen & Bathrooms (locations specified by builder)
- Central Air Conditioning • Tiled Ensuite Shower Walls with Custom Glass Door

### Urbandale's Smart Home Features

**Control everything from your phone with no subscriptions.  
Discover Urbandale's smart home features as standard!**

- Video Doorbell • Programmable WiFi Thermostat • Four Smart Switches (locations specified by builder)
- WiFi Garage Door Opener • Convenient USB outlet in Kitchen & Master Bedroom (locations specified by builder)



All illustrations are artist concepts. Homes may be left of right versions. All dimensions are approximate. Actual usable floor space may vary from stated area. Structural/mechanical requirements may result in dimensional revisions and/or adjustments to layout. Plans and specifications are subject to change without notice. Exterior elevations are determined by Urbandale and may vary. ENERGY STAR® is an official mark of Natural Resources Canada. Used with permission. E. & O. E. 19/01/21

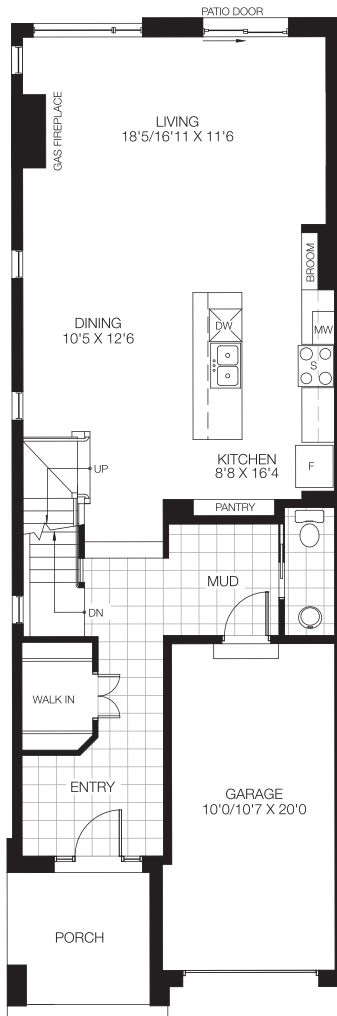


# ATLANTIS II

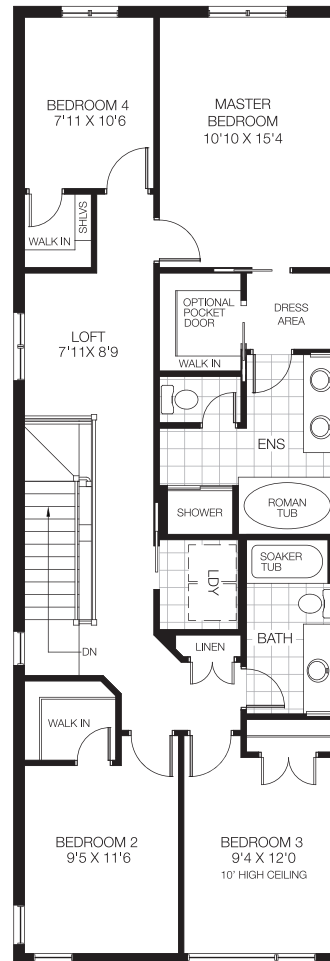
2,426 sq.ft.

Phase 115-2 Block 7 Lot 36  
708 Horned Owl Ave

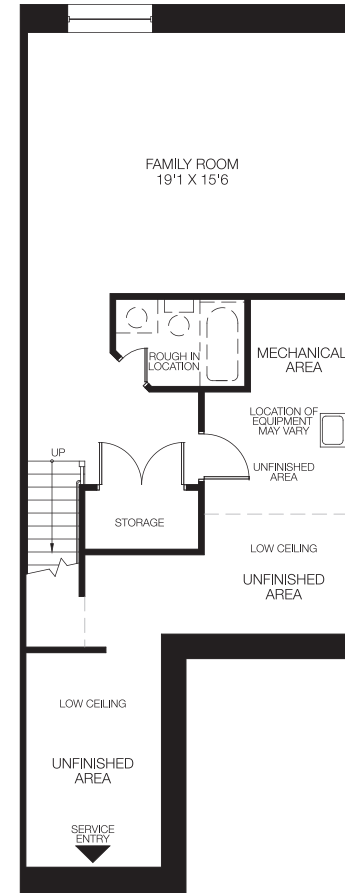
*Riverside*  
South



GROUND FLOOR



OPT 1. BEDROOM FLOOR  
4 BEDROOMS W/LOFT



BASEMENT  
FINISHED AREA 418 SQ.FT.



All illustrations are artist concepts. Homes may be left or right versions. All dimensions are approximate. Actual usable floor space may vary from stated area. Structural/mechanical requirements may result in dimensional revisions and/or adjustments to layout including bulkheads. Brick sides and rears are subject to site specifications, please see Sales Consultant for details. Plans and specifications are subject to change without notice. Exterior elevations are determined by Urbandale and may vary. The ENERGY STAR® for New Homes Standard is administered and promoted in Canada by Natural Resources Canada. E. & O. E. 19/01/21

